

**Experience the Gold
Standard of Green Living**

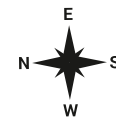
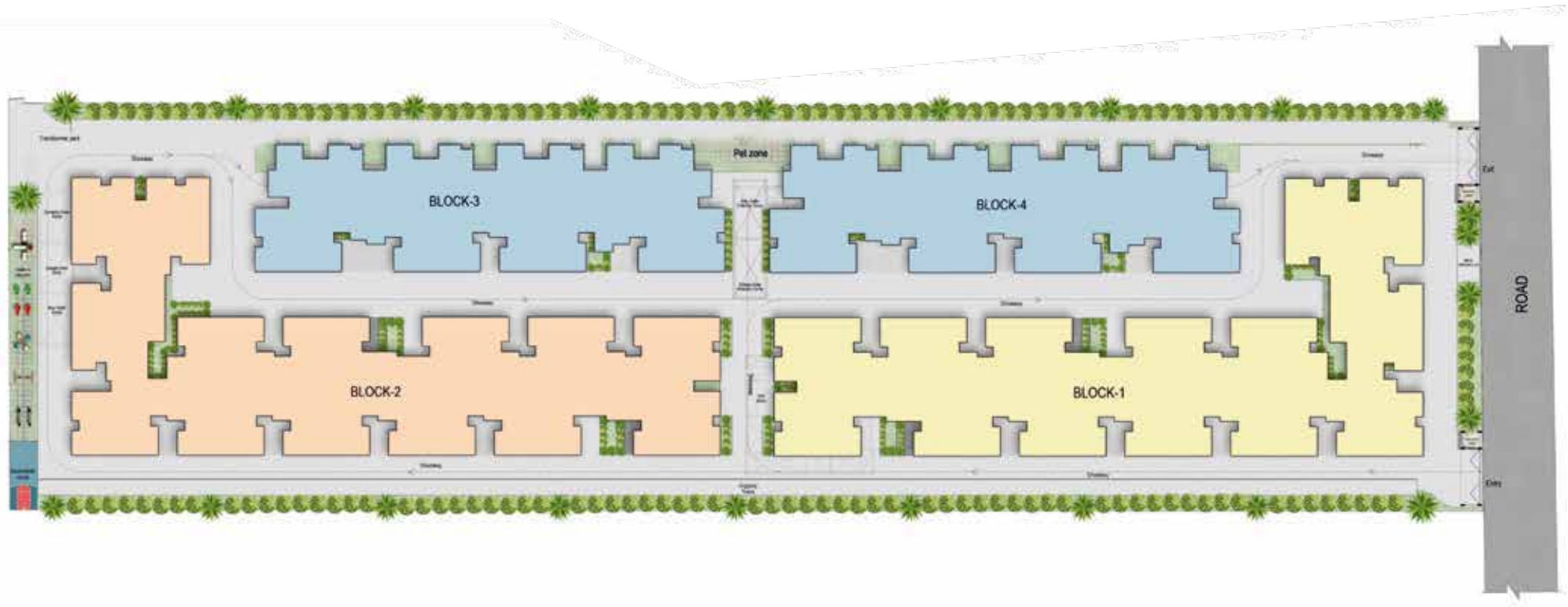


**Tambaram's First
IGBC Pre-Gold Certified Green Homes**

Site Cum Stilt Floor Plan



Block Plan



TYPICAL FLOOR PLAN - BLOCK 1 (1st FLOOR)

3BHK+2T (B1-103)
 Private Terrace Area - 64 Sq.ft.
 Saleable Area - 1301 Sq.ft.
 Carpet Area - 890 Sq.ft.
 UDS - 482 Sq.ft.
 East Facing

3BHK+2T (B1-104)
 Private Terrace Area - 135 Sq.ft.
 Saleable Area - 1331 Sq.ft.
 Carpet Area - 899 Sq.ft.
 UDS - 493 Sq.ft.
 East Facing

3BHK+2T (B1-105)
 Private Terrace Area - 135 Sq.ft.
 Saleable Area - 1330 Sq.ft.
 Carpet Area - 899 Sq.ft.
 UDS - 492 Sq.ft.
 East Facing

3BHK+2T (B1-106)
 Private Terrace Area - 135 Sq.ft.
 Saleable Area - 1329 Sq.ft.
 Carpet Area - 899 Sq.ft.
 UDS - 492 Sq.ft.
 East Facing

3BHK+2T (B1-107)
 Private Terrace Area - 71 Sq.ft.
 Saleable Area - 1335 Sq.ft.
 Carpet Area - 899 Sq.ft.
 UDS - 494 Sq.ft.
 East Facing

3BHK+2T (B1-108)
 Saleable Area - 1268 Sq.ft.
 Carpet Area - 849 Sq.ft.
 UDS - 469 Sq.ft.
 East Facing



3BHK+2T (B1-113)
 Private Terrace Area - 71 Sq.ft.
 Saleable Area - 1361 Sq.ft.
 Carpet Area - 894 Sq.ft.
 UDS - 504 Sq.ft.
 North Facing

3BHK+2T (B1-112)
 Private Terrace Area - 64 Sq.ft.
 Saleable Area - 1361 Sq.ft.
 Carpet Area - 894 Sq.ft.
 UDS - 504 Sq.ft.
 North Facing

3BHK+2T (B1-111)
 Private Terrace Area - 71 Sq.ft.
 Saleable Area - 1361 Sq.ft.
 Carpet Area - 894 Sq.ft.
 UDS - 504 Sq.ft.
 North Facing

3BHK+2T (B1-110)
 Private Terrace Area - 135 Sq.ft.
 Saleable Area - 1357 Sq.ft.
 Carpet Area - 894 Sq.ft.
 UDS - 502 Sq.ft.
 North Facing

3BHK+2T (B1-109)
 Private Terrace Area - 64 Sq.ft.
 Saleable Area - 1302 Sq.ft.
 Carpet Area - 858 Sq.ft.
 UDS - 482 Sq.ft.
 North Facing

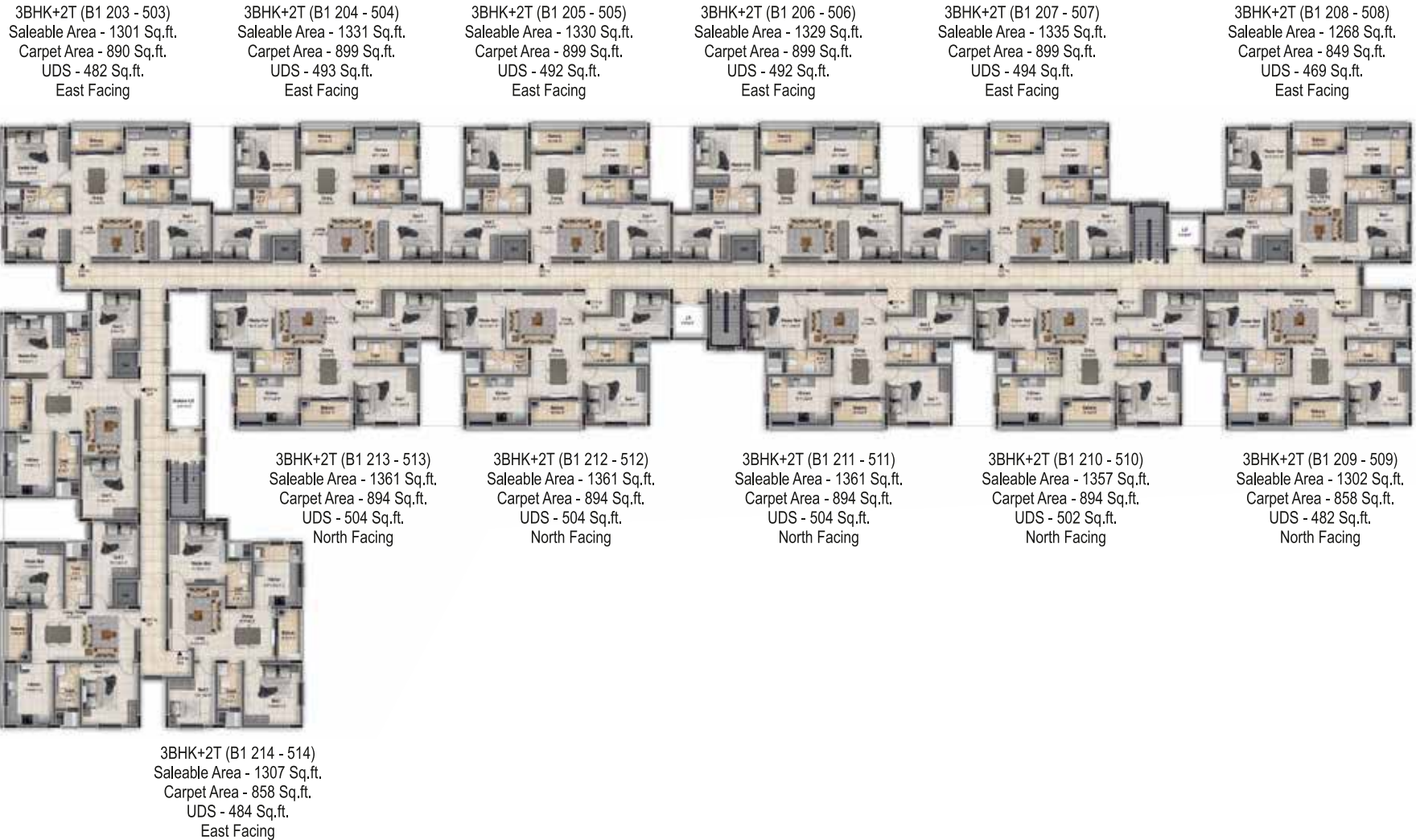
Gym

Yoga

Multipurpose
Hall



TYPICAL FLOOR PLAN - BLOCK 1 (2nd to 5th FLOOR)



TYPICAL FLOOR PLAN - BLOCK 2 (1st FLOOR)

3BHK+2T (B2-101)
 Saleable Area - 1300 Sq.ft
 Carpet Area - 890 Sq.ft
 UDS - 481 Sq.ft
 East Facing

3BHK+2T (B2-102)
 Private Terrace Area - 64 Sq.ft
 Saleable Area - 1327 Sq.ft
 Carpet Area - 899 Sq.ft
 UDS - 491 Sq.ft
 East Facing

3BHK+2T (B2-103)
 Private Terrace Area - 135 Sq.ft
 Saleable Area - 1323 Sq.ft
 Carpet Area - 899 Sq.ft
 UDS - 490 Sq.ft
 East Facing

3BHK+2T (B2-104)
 Private Terrace Area - 135 Sq.ft
 Saleable Area - 1323 Sq.ft
 Carpet Area - 899 Sq.ft
 UDS - 490 Sq.ft
 East Facing

3BHK+2T (B2-105)
 Private Terrace Area - 135 Sq.ft
 Saleable Area - 1323 Sq.ft
 Carpet Area - 899 Sq.ft
 UDS - 490 Sq.ft
 East Facing

3BHK+2T (B2-106)
 Private Terrace Area - 71 Sq.ft
 Saleable Area - 1257 Sq.ft
 Carpet Area - 849 Sq.ft
 UDS - 465 Sq.ft
 East Facing



3BHK+2T (B2-114)
 Private Terrace Area - 71 Sq.ft
 Saleable Area - 1284 Sq.ft
 Carpet Area - 844 Sq.ft
 UDS - 475 Sq.ft
 North Facing

3BHK+2T (B2-113)
 Private Terrace Area - 135 Sq.ft
 Saleable Area - 1350 Sq.ft
 Carpet Area - 894 Sq.ft
 UDS - 500 Sq.ft
 North Facing

3BHK+2T (B2-112)
 Private Terrace Area - 64 Sq.ft
 Saleable Area - 1353 Sq.ft
 Carpet Area - 894 Sq.ft
 UDS - 501 Sq.ft
 North Facing

3BHK+2T (B2-111)
 Private Terrace Area - 71 Sq.ft
 Saleable Area - 1354 Sq.ft
 Carpet Area - 894 Sq.ft
 UDS - 501 Sq.ft
 North Facing

3BHK+2T (B2-110)
 Private Terrace Area - 64 Sq.ft
 Saleable Area - 1354 Sq.ft
 Carpet Area - 894 Sq.ft
 UDS - 501 Sq.ft
 North Facing

3BHK+2T (B2-107)
 Private Terrace Area - 71 Sq.ft
 Saleable Area - 1354 Sq.ft
 Carpet Area - 899 Sq.ft
 UDS - 501 Sq.ft
 East Facing

3BHK+2T (B2-108)
 Private Terrace Area - 64 Sq.ft
 Saleable Area - 1295 Sq.ft
 Carpet Area - 859 Sq.ft
 UDS - 479 Sq.ft
 East Facing

3BHK+2T (B2-109)
 Saleable Area - 1262 Sq.ft
 Carpet Area - 849 Sq.ft
 UDS - 467 Sq.ft
 North Facing



TYPICAL FLOOR PLAN - BLOCK 2 (2nd to 5th FLOOR)



3BHK+2T (B2 201 - 501)
 Saleable Area - 1300 Sq.ft.
 Carpet Area - 890 Sq.ft.
 UDS - 481 Sq.ft.
 East Facing

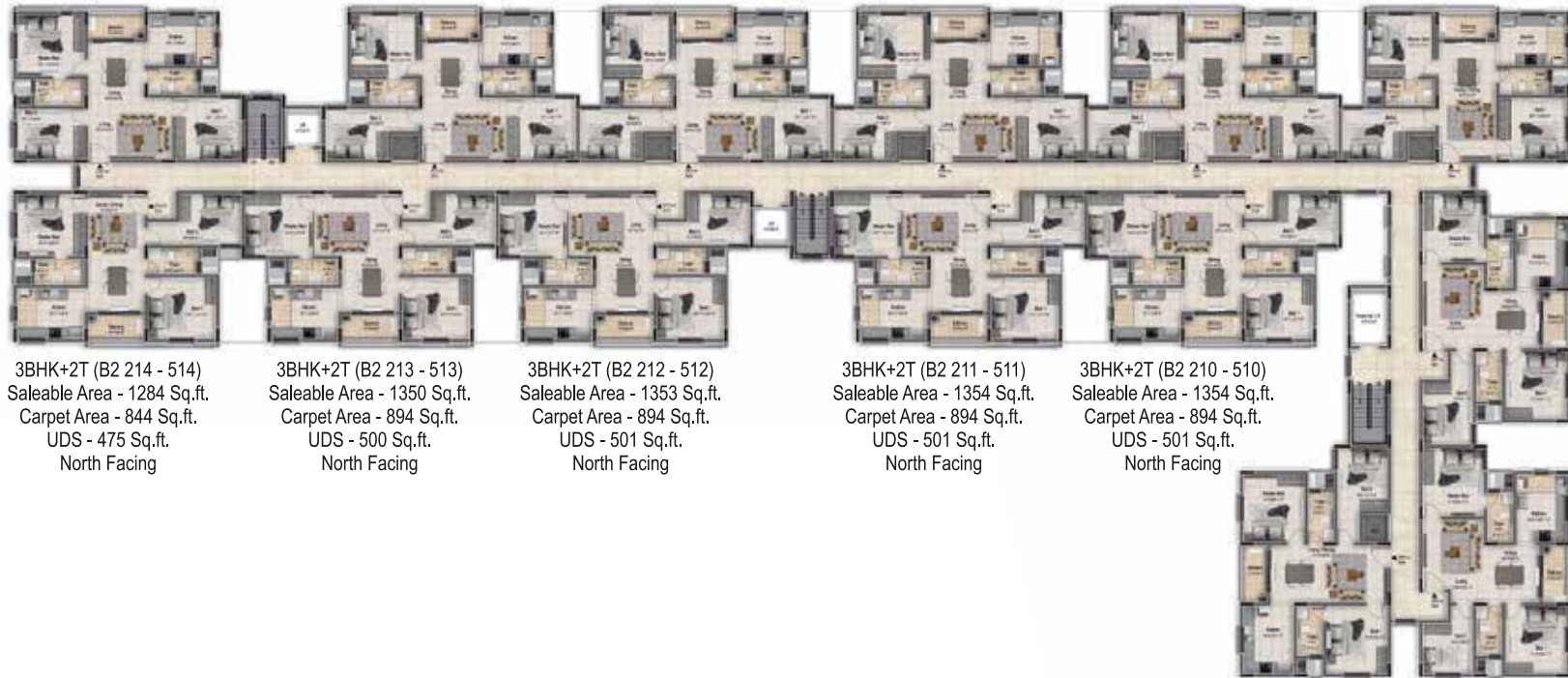
3BHK+2T (B2 202 - 502)
 Saleable Area - 1327 Sq.ft.
 Carpet Area - 899 Sq.ft.
 UDS - 491 Sq.ft.
 East Facing

3BHK+2T (B2 203 - 503)
 Saleable Area - 1323 Sq.ft.
 Carpet Area - 899 Sq.ft.
 UDS - 490 Sq.ft.
 East Facing

3BHK+2T (B2 204 - 504)
 Saleable Area - 1323 Sq.ft.
 Carpet Area - 899 Sq.ft.
 UDS - 490 Sq.ft.
 East Facing

3BHK+2T (B2 205 - 505)
 Saleable Area - 1323 Sq.ft.
 Carpet Area - 899 Sq.ft.
 UDS - 490 Sq.ft.
 East Facing

3BHK+2T (B2 206 - 506)
 Saleable Area - 1257 Sq.ft.
 Carpet Area - 849 Sq.ft.
 UDS - 465 Sq.ft.
 East Facing



3BHK+2T (B2 214 - 514)
 Saleable Area - 1284 Sq.ft.
 Carpet Area - 844 Sq.ft.
 UDS - 475 Sq.ft.
 North Facing

3BHK+2T (B2 213 - 513)
 Saleable Area - 1350 Sq.ft.
 Carpet Area - 894 Sq.ft.
 UDS - 500 Sq.ft.
 North Facing

3BHK+2T (B2 212 - 512)
 Saleable Area - 1353 Sq.ft.
 Carpet Area - 894 Sq.ft.
 UDS - 501 Sq.ft.
 North Facing

3BHK+2T (B2 211 - 511)
 Saleable Area - 1354 Sq.ft.
 Carpet Area - 894 Sq.ft.
 UDS - 501 Sq.ft.
 North Facing

3BHK+2T (B2 210 - 510)
 Saleable Area - 1354 Sq.ft.
 Carpet Area - 894 Sq.ft.
 UDS - 501 Sq.ft.
 North Facing

3BHK+2T (B2 207 - 507)
 Saleable Area - 1354 Sq.ft.
 Carpet Area - 899 Sq.ft.
 UDS - 501 Sq.ft.
 East Facing

3BHK+2T (B2 208 - 508)
 Saleable Area - 1295 Sq.ft.
 Carpet Area - 859 Sq.ft.
 UDS - 479 Sq.ft.
 East Facing

3BHK+2T (B2 209 - 509)
 Saleable Area - 1262 Sq.ft.
 Carpet Area - 849 Sq.ft.
 UDS - 467 Sq.ft.
 North Facing



TYPICAL FLOOR PLAN - BLOCK 3 & 4 (1st FLOOR)

3BHK+2T (B3-101)
Private Terrace Area - 154 Sq.ft
Saleable Area - 1334 Sq.ft
Carpet Area - 890 Sq.ft
UDS - 494 Sq.ft
East Facing

3BHK+2T (B3-102)
Private Terrace Area - 66 Sq.ft
Saleable Area - 1362 Sq.ft
Carpet Area - 961 Sq.ft
UDS - 504 Sq.ft
East Facing

3BHK+2T (B3-103)
Private Terrace Area - 217 Sq.ft
Saleable Area - 1362 Sq.ft
Carpet Area - 931 Sq.ft
UDS - 504 Sq.ft
East Facing

3BHK+2T (B3-104)
Private Terrace Area - 169 Sq.ft
Saleable Area - 1295 Sq.ft
Carpet Area - 880 Sq.ft
UDS - 479 Sq.ft
East Facing



2BHK+2T (B3-108)
Saleable Area - 1102 Sq.ft
Carpet Area - 651 Sq.ft
UDS - 408 Sq.ft
North Facing

2BHK+2T (B3-107)
Saleable Area - 1097 Sq.ft
Carpet Area - 651 Sq.ft
UDS - 406 Sq.ft
North Facing

2BHK+2T (B3-106)
Saleable Area - 1097 Sq.ft
Carpet Area - 651 Sq.ft
UDS - 406 Sq.ft
North Facing

2BHK+2T (B3-105)
Saleable Area - 1103 Sq.ft
Carpet Area - 651 Sq.ft
UDS - 408 Sq.ft
North Facing



TYPICAL FLOOR PLAN - BLOCK 3 & 4 (2nd to 5th FLOOR)



3BHK+2T (201 - 501)
 Saleable Area - 1334 Sq.ft.
 Carpet Area - 890 Sq.ft.
 UDS - 494 Sq.ft.
 East Facing

3BHK+2T (202 - 502)
 Saleable Area - 1362 Sq.ft.
 Carpet Area - 931 Sq.ft.
 UDS - 504 Sq.ft.
 East Facing

3BHK+2T (203 - 503)
 Saleable Area - 1362 Sq.ft.
 Carpet Area - 931 Sq.ft.
 UDS - 504 Sq.ft.
 East Facing

3BHK+2T (204 - 504)
 Saleable Area - 1295 Sq.ft.
 Carpet Area - 880 Sq.ft.
 UDS - 479 Sq.ft.
 East Facing



2BHK+2T (208 - 508)
 Saleable Area - 1102 Sq.ft.
 Carpet Area - 651 Sq.ft.
 UDS - 408 Sq.ft.
 North Facing

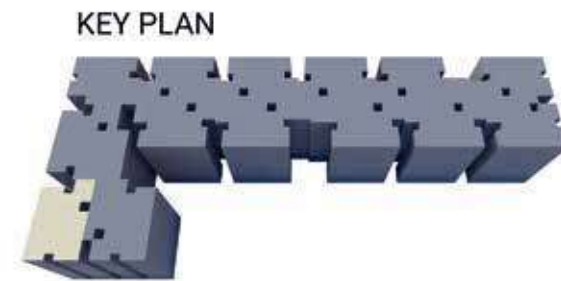
2BHK+2T (207 - 507)
 Saleable Area - 1097 Sq.ft.
 Carpet Area - 651 Sq.ft.
 UDS - 406 Sq.ft.
 North Facing

2BHK+2T (206 - 506)
 Saleable Area - 1097 Sq.ft.
 Carpet Area - 651 Sq.ft.
 UDS - 406 Sq.ft.
 North Facing

2BHK+2T (205 - 505)
 Saleable Area - 1103 Sq.ft.
 Carpet Area - 651 Sq.ft.
 UDS - 408 Sq.ft.
 North Facing



INDIVIDUAL UNIT PLAN (3BHK+2T - 1264 Sq.ft.)



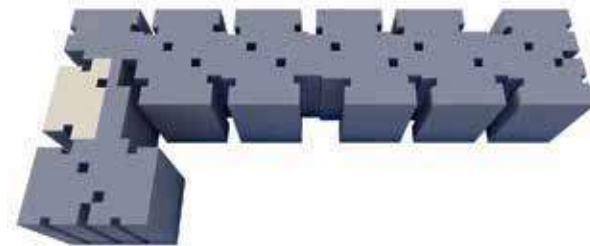
UNIT PLAN : 3BHK+2T - North Facing (Block B1)

Saleable Area - 1264 Sq.ft. | Carpet Area - 849 Sq.ft. | UDS Area : 468 Sq.ft. | Unit Nos. : B1 201 - 501

INDIVIDUAL UNIT PLAN (3BHK+2T - 1334 Sq.ft.)



KEY PLAN



UNIT PLAN : 3BHK+2T - North Facing (Block B1)

Saleable Area - 1334 Sq.ft. | Carpet Area - 899 Sq.ft. | UDS Area : 494 Sq.ft. | Unit Nos. : B1 202 - 502



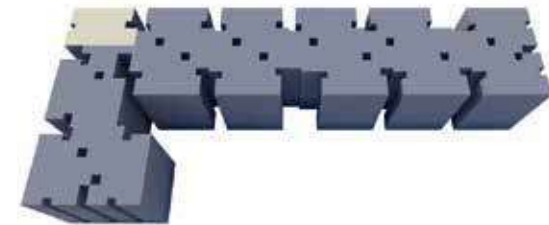
INDIVIDUAL UNIT PLAN (3BHK+2T - 1301 Sq.ft.)



203 - 503



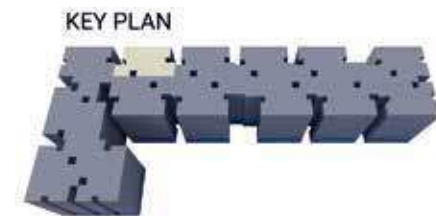
KEY PLAN



UNIT PLAN : 3BHK+2T - East Facing (Block - B1)

Saleable Area - 1301 Sq.ft. | Carpet Area - 890 Sq.ft. | UDS Area : 482 Sq.ft. | Unit Nos. : B1 203 - 503

INDIVIDUAL UNIT PLAN (3BHK+2T - 1331 Sq.ft.)



UNIT PLAN : 3BHK+2T - East Facing (Block - B1)

Saleable Area - 1331 Sq.ft. | Carpet Area - 899 Sq.ft. | UDS Area : 493 Sq.ft. | Unit Nos. : B1 204 - 504

INDIVIDUAL UNIT PLAN (3BHK+2T - 1330 Sq.ft.)



KEY PLAN



UNIT PLAN : 3BHK+2T - East Facing (Block - B1)

Saleable Area - 1330 Sq.ft. | Carpet Area - 899 Sq.ft. | UDS Area : 492 Sq.ft. | Unit Nos. : B1 205 - 505

INDIVIDUAL UNIT PLAN (3BHK+2T - 1329 Sq.ft.)



KEY PLAN



UNIT PLAN : 3BHK+2T - East Facing (Block - B1)

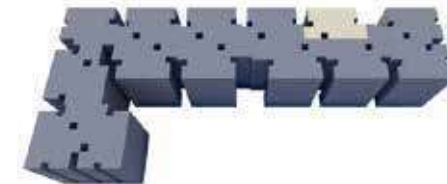
Saleable Area - 1329 Sq.ft. | Carpet Area - 899 Sq.ft. | UDS Area : 492 Sq.ft. | Unit Nos. : B1 206 - 506



INDIVIDUAL UNIT PLAN (3BHK+2T - 1335 Sq.ft.)



KEY PLAN



UNIT PLAN : 3BHK+2T - East Facing (Block - B1)

Saleable Area - 1335 Sq.ft. | Carpet Area - 899 Sq.ft. | UDS Area : 494 Sq.ft. | Unit Nos. : B1 207 - 507

INDIVIDUAL UNIT PLAN (3BHK+2T - 1268 Sq.ft.)



KEY PLAN



UNIT PLAN : 3BHK+2T - East Facing (Block - B1)

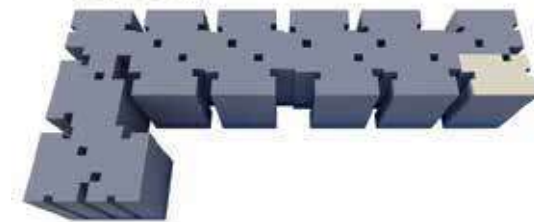
Saleable Area - 1268 Sq.ft. | Carpet Area - 849 Sq.ft. | UDS Area : 469 Sq.ft. | Unit Nos. : B1 208 - 508



INDIVIDUAL UNIT PLAN (3BHK+2T - 1302 Sq.ft.)



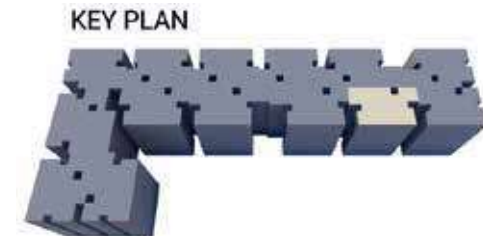
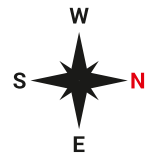
KEY PLAN



UNIT PLAN : 3BHK+2T - North Facing (Block - B1)

Saleable Area - 1302 Sq.ft. | Carpet Area - 858 Sq.ft. | UDS Area : 482 Sq.ft. | Unit Nos. : B1 209 - 509

INDIVIDUAL UNIT PLAN (3BHK+2T - 1357 Sq.ft.)



UNIT PLAN : 3BHK+2T - North Facing (Block - B1)

Saleable Area - 1357 Sq.ft. | Carpet Area - 894 Sq.ft. | UDS Area : 502 Sq.ft. | Unit Nos. : B1 210 - 510



INDIVIDUAL UNIT PLAN (3BHK+2T - 1361 Sq.ft.)



KEY PLAN



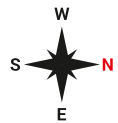
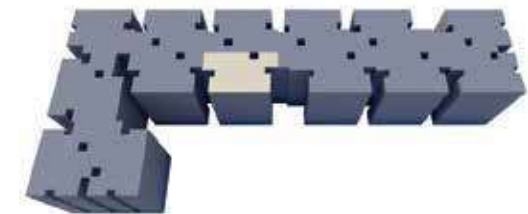
UNIT PLAN : 3BHK+2T - North Facing (Block - B1)

Saleable Area - 1361 Sq.ft. | Carpet Area - 894 Sq.ft. | UDS Area : 504 Sq.ft. | Unit Nos. : B1 211 - 511

INDIVIDUAL UNIT PLAN (3BHK+2T - 1361 Sq.ft.)



KEY PLAN



UNIT PLAN : 3BHK+2T - North Facing (Block - B1)

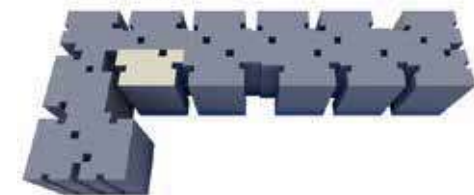
Saleable Area - 1361 Sq.ft. | Carpet Area - 894 Sq.ft. | UDS Area : 504 Sq.ft. | Unit Nos. : B1 212 - 512



INDIVIDUAL UNIT PLAN (3BHK+2T - 1361 Sq.ft.)



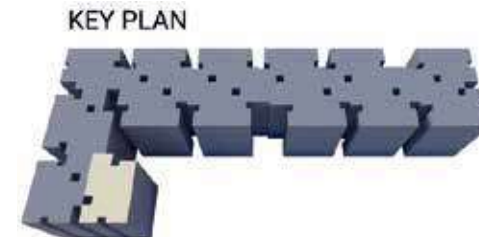
KEY PLAN



UNIT PLAN : 3BHK+2T - North Facing (Block - B1)

Saleable Area - 1361 Sq.ft. | Carpet Area - 894 Sq.ft. | UDS Area : 504 Sq.ft. | Unit Nos. : B1 213 - 513

INDIVIDUAL UNIT PLAN (3BHK+2T - 1307 Sq.ft.)



UNIT PLAN : 3BHK+2T - East Facing (Block - B1)

Saleable Area - 1307 Sq.ft. | Carpet Area - 858 Sq.ft. | UDS Area : 484 Sq.ft. | Unit Nos. : B1 214 - 514

INDIVIDUAL UNIT PLAN (3BHK+2T - 1300 Sq.ft.)



KEY PLAN



UNIT PLAN : 3BHK+2T - East Facing (Block - B2)

Saleable Area - 1300 Sq.ft. | Carpet Area - 890 Sq.ft. | UDS Area : 481 Sq.ft. | Unit Nos. : B2 201 - 501

INDIVIDUAL UNIT PLAN (3BHK+2T - 1327 Sq.ft.)



KEY PLAN



UNIT PLAN : 3BHK+2T - East Facing (Block - B2)

Saleable Area - 1327 Sq.ft. | Carpet Area - 899 Sq.ft. | UDS Area : 491 Sq.ft. | Unit Nos. : B2 202 - 502



INDIVIDUAL UNIT PLAN (3BHK+2T - 1323 Sq.ft.)



KEY PLAN



UNIT PLAN : 3BHK+2T - East Facing (Block - B2)

Saleable Area - 1323 Sq.ft. | Carpet Area - 899 Sq.ft. | UDS Area : 490 Sq.ft. | Unit Nos. : B2 203 - 503

INDIVIDUAL UNIT PLAN (3BHK+2T - 1323 Sq.ft.)



KEY PLAN



UNIT PLAN : 3BHK+2T - East Facing (Block - B2)

Saleable Area - 1323 Sq.ft. | Carpet Area - 899 Sq.ft. | UDS Area : 490 Sq.ft. | Unit Nos. : B2 204 - 504



INDIVIDUAL UNIT PLAN (3BHK+2T - 1323 Sq.ft.)



KEY PLAN



UNIT PLAN : 3BHK+2T - East Facing (Block - B2)

Saleable Area - 1323 Sq.ft. | Carpet Area - 899 Sq.ft. | UDS Area : 490 Sq.ft. | Unit Nos. : B2 205 - 505

INDIVIDUAL UNIT PLAN (3BHK+2T - 1257 Sq.ft.)



KEY PLAN



UNIT PLAN : 3BHK+2T - East Facing (Block - B2)

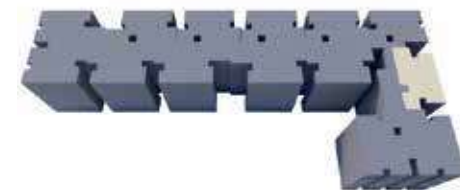
Saleable Area - 1257 Sq.ft. | Carpet Area - 849 Sq.ft. | UDS Area : 465 Sq.ft. | Unit Nos. : B2 206 - 506



INDIVIDUAL UNIT PLAN (3BHK+2T - 1354 Sq.ft.)



KEY PLAN



UNIT PLAN : 3BHK+2T - East Facing (Block - B2)

Saleable Area - 1354 Sq.ft. | Carpet Area - 899 Sq.ft. | UDS Area : 501 Sq.ft. | Unit Nos. : B2 207 - 507

INDIVIDUAL UNIT PLAN (3BHK+2T - 1295 Sq.ft.)



KEY PLAN

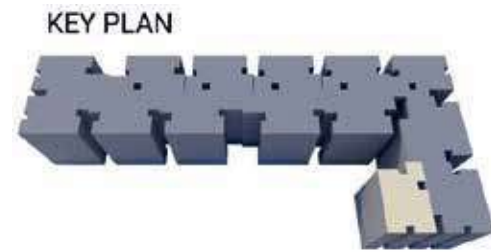


UNIT PLAN : 3BHK+2T - East Facing (Block - B2)

Saleable Area - 1295 Sq.ft. | Carpet Area - 859 Sq.ft. | UDS Area : 479 Sq.ft. | Unit Nos. : B2 208 - 508



INDIVIDUAL UNIT PLAN (3BHK+2T - 1262 Sq.ft.)



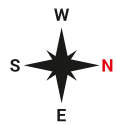
UNIT PLAN : 3BHK+2T - North Facing (Block - B2)

Saleable Area - 1262 Sq.ft. | Carpet Area - 849 Sq.ft. | UDS Area : 467 Sq.ft. | Unit Nos. : B2 209 - 509

INDIVIDUAL UNIT PLAN (3BHK+2T - 1354 Sq.ft.)



KEY PLAN



UNIT PLAN : 3BHK+2T - North Facing (Block - B2)

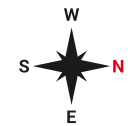
Saleable Area - 1354 Sq.ft. | Carpet Area - 894 Sq.ft. | UDS Area : 501 Sq.ft. | Unit Nos. : B2 210 - 510



INDIVIDUAL UNIT PLAN (3BHK+2T - 1354 Sq.ft.)



KEY PLAN



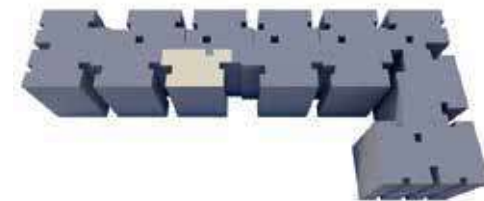
UNIT PLAN : 3BHK+2T - North Facing (Block - B2)

Saleable Area - 1354 Sq.ft. | Carpet Area - 894 Sq.ft. | UDS Area : 501 Sq.ft. | Unit Nos. : B2 211 - 511

INDIVIDUAL UNIT PLAN (3BHK+2T - 1353 Sq.ft.)



KEY PLAN



UNIT PLAN : 3BHK+2T - North Facing (Block - B2)

Saleable Area - 1353 Sq.ft. | Carpet Area - 894 Sq.ft. | UDS Area : 501 Sq.ft. | Unit Nos. : B2 212 - 512



INDIVIDUAL UNIT PLAN (3BHK+2T - 1350 Sq.ft.)



KEY PLAN



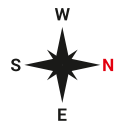
UNIT PLAN : 3BHK+2T - North Facing (Block - B2)

Saleable Area - 1350 Sq.ft. | Carpet Area - 894 Sq.ft. | UDS Area : 500 Sq.ft. | Unit Nos. : B2 213 - 513

INDIVIDUAL UNIT PLAN (3BHK+2T - 1284 Sq.ft.)



KEY PLAN



UNIT PLAN : 3BHK+2T - North Facing (Block - B2)

Saleable Area - 1284 Sq.ft. | Carpet Area - 844 Sq.ft. | UDS Area : 475 Sq.ft. | Unit Nos. : B2 214 - 514



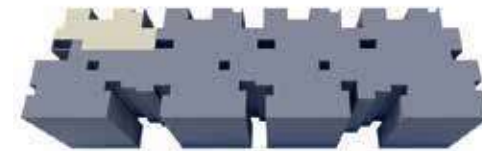
INDIVIDUAL UNIT PLAN (3BHK+2T - 1334 Sq.ft.)



201 - 501



KEY PLAN



UNIT PLAN : 3BHK+2T - East Facing (Block - B3 & B4)

Saleable Area - 1334 Sq.ft. | Carpet Area - 890 Sq.ft. | UDS Area : 494 Sq.ft. | Unit Nos. : B3 & B4 201 - 501

INDIVIDUAL UNIT PLAN (3BHK+2T - 1362 Sq.ft.)



202 - 502



KEY PLAN



UNIT PLAN : 3BHK+2T - East Facing (Block - B3 & B4)

Saleable Area - 1362 Sq.ft. | Carpet Area - 931 Sq.ft. | UDS Area : 504 Sq.ft. | Unit Nos. : B3 & B4 202 - 502



INDIVIDUAL UNIT PLAN (3BHK+2T - 1362 Sq.ft.)



KEY PLAN



UNIT PLAN : 3BHK+2T - East Facing (Block - B3 & B4)

Saleable Area - 1362 Sq.ft. | Carpet Area - 931 Sq.ft. | UDS Area : 504 Sq.ft. | Unit Nos. : B3 & B4 203 - 503

INDIVIDUAL UNIT PLAN (3BHK+2T - 1295 Sq.ft.)



204 - 504



KEY PLAN



UNIT PLAN : 3BHK+2T - East Facing (Block - B3 & B4)

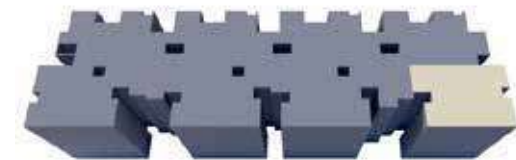
Saleable Area - 1295 Sq.ft. | Carpet Area - 880 Sq.ft. | UDS Area : 479 Sq.ft. | Unit Nos. : B3 & B4 204 - 504



INDIVIDUAL UNIT PLAN (2BHK+2T - 1103 Sq.ft.)



KEY PLAN



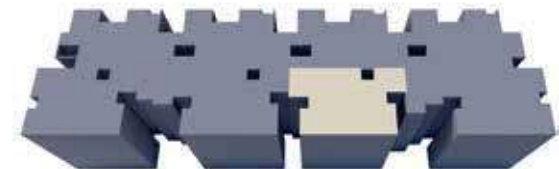
UNIT PLAN : 2BHK+2T - North Facing (Block - B3 & B4)

Saleable Area - 1103 Sq.ft. | Carpet Area - 651 Sq.ft. | UDS Area : 408 Sq.ft. | Unit Nos. : B3 & B4 205 - 505

INDIVIDUAL UNIT PLAN (2BHK+2T - 1097 Sq.ft.)



KEY PLAN

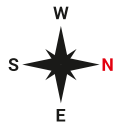


UNIT PLAN : 2BHK+2T - North Facing (Block - B3 & B4)

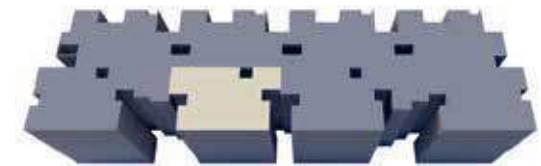
Saleable Area - 1097 Sq.ft. | Carpet Area - 651 Sq.ft. | UDS Area : 406 Sq.ft. | Unit Nos. : B3 & B4 206 - 506



INDIVIDUAL UNIT PLAN (2BHK+2T - 1097 Sq.ft.)



KEY PLAN



UNIT PLAN : 2BHK+2T - North Facing (Block - B3 & B4)

Saleable Area - 1097 Sq.ft. | Carpet Area - 651 Sq.ft. | UDS Area : 406 Sq.ft. | Unit Nos. : B3 & B4 207 - 507

INDIVIDUAL UNIT PLAN (2BHK+2T - 1102 Sq.ft.)



KEY PLAN



UNIT PLAN : 2BHK+2T - North Facing (Block - B3 & B4)

Saleable Area - 1102 Sq.ft. | Carpet Area - 651 Sq.ft. | UDS Area : 408 Sq.ft. | Unit Nos. : B3 & B4 208 - 508

