

DRA
SKYLA⁺NTIS

LIVE THE PLUS LIFE

MAX PRIVACY, MAX CONNECTIVITY & MAX COMFORT!

DRA
EXPERIENCE NICE



SITE CUM STILT FLOOR PLAN



UPPER STILT FLOOR PLAN



TYPICAL FLOOR PLAN - 4th to 14th FLOOR

BLOCK - B1

3BHK+2T - (B1 403 - B1 1303)
Saleable Area : 1342 Sq.ft.
Carpet Area : 850 Sq.ft.
UDS : 415 Sq.ft.
North Facing



3BHK+2T - (B1 404 - B1 1304)
Saleable Area : 1391 Sq.ft.
Carpet Area : 841 Sq.ft.
UDS : 430 Sq.ft.
East Facing



2BHK+2T - (B1 402 - B1 1302)
Saleable Area : 1198 Sq.ft.
Carpet Area : 752 Sq.ft.
UDS : 371 Sq.ft.
North Facing

2BHK+2T - (B1 405 - B1 1305)
Saleable Area : 1239 Sq.ft.
Carpet Area : 743 Sq.ft.
UDS : 383 Sq.ft.
East Facing



3BHK+2T - (B1 401 - B1 1301)
Saleable Area : 1363 Sq.ft.
Carpet Area : 847 Sq.ft.
UDS : 422 Sq.ft.
North Facing

3BHK+2T - (B1 406 - B1 1306)
Saleable Area : 1382 Sq.ft.
Carpet Area : 840 Sq.ft.
UDS : 428 Sq.ft.
East Facing

BLOCK - B2

3BHK+3T - (B2 401 - B2 1301)
Saleable Area : 1675 Sq.ft.
Carpet Area : 1068 Sq.ft.
UDS : 519 Sq.ft.
East Facing



3BHK+3T - (B2 402 - B2 1302)
Saleable Area : 1675 Sq.ft.
Carpet Area : 1068 Sq.ft.
UDS : 519 Sq.ft.
East Facing



4BHK+3T - (B2 404 - B2 1304)
Saleable Area : 1911 Sq.ft.
Carpet Area : 1193 Sq.ft.
UDS : 591 Sq.ft.
North Facing

3BHK+3T - (B2 403 - B2 1303)
Saleable Area : 1700 Sq.ft.
Carpet Area : 1045 Sq.ft.
UDS : 526 Sq.ft.
North Facing



TERRACE PLAN

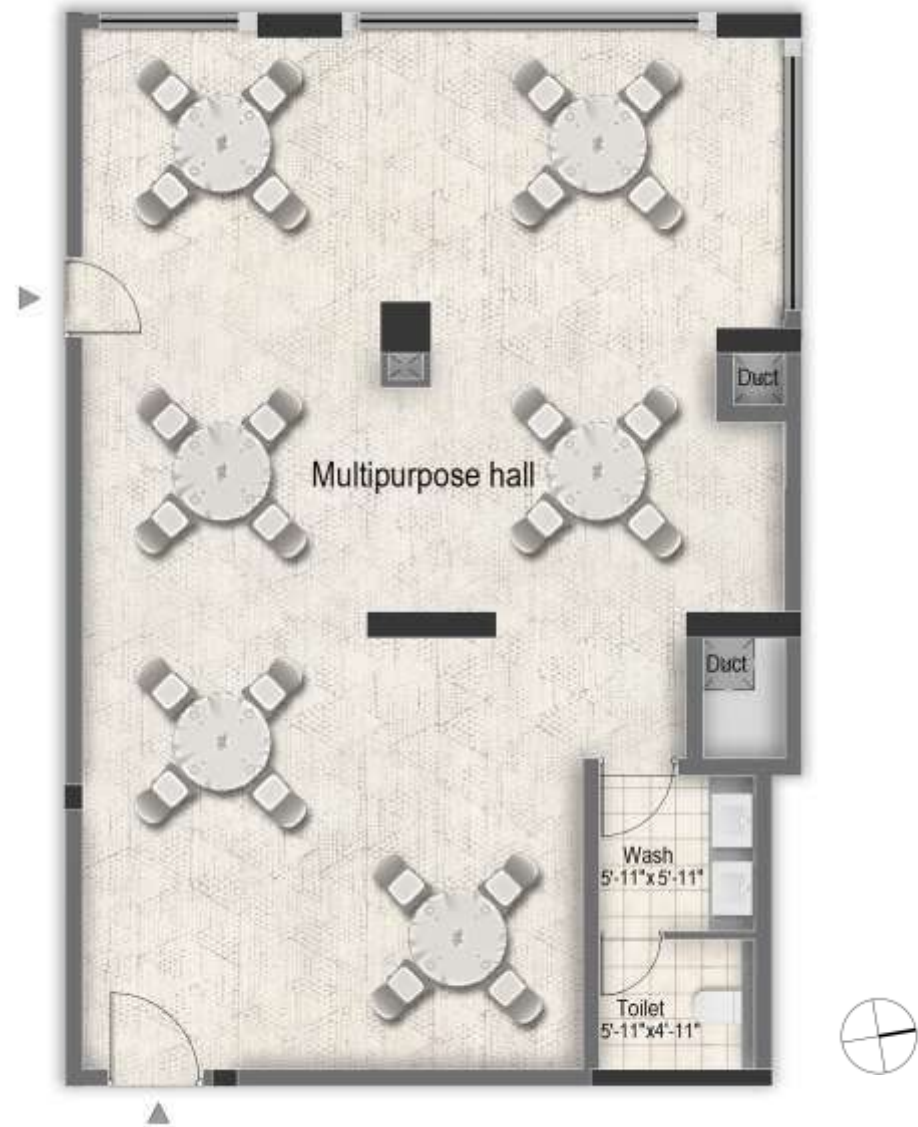
BLOCK - B1



BLOCK - B2



FIRST FLOOR - MULTIPURPOSE HALL



FIRST FLOOR - GYM



INDIVIDUAL UNIT PLAN (3 BHK+3T - 1675 Sq.ft.)



Key Plan



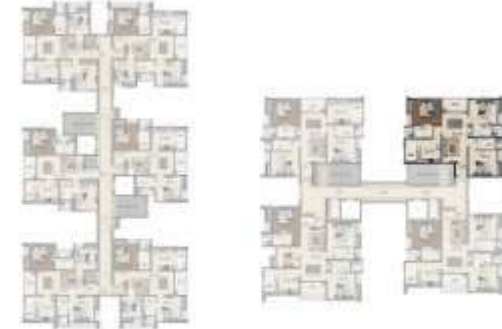
UNIT PLAN : 3BHK+3T - East Facing (Block - B2)

Saleable Area - 1675 Sq.ft. | Carpet Area - 1068 Sq.ft. | UDS Area : 519 Sq.ft | Unit Nos. : B2 401 - B2 1301

INDIVIDUAL UNIT PLAN (3 BHK+3T - 1675 Sq.ft.)



Key Plan



UNIT PLAN : 3BHK+3T - North Facing (Block - B2)

Saleable Area - 1675 Sq.ft. | Carpet Area - 1068 Sq.ft. | UDS Area : 519 Sq.ft. | Unit Nos. : B2 402 - B2 1302

INDIVIDUAL UNIT PLAN (3 BHK+3T - 1700 Sq.ft.)



Key Plan



UNIT PLAN : 3BHK+3T - North Facing (Block - B2)

Saleable Area - 1700 Sq.ft. | Carpet Area - 1045 Sq.ft. | UDS Area : 526 Sq.ft. | Unit Nos. : B2 403 - B2 1303

INDIVIDUAL UNIT PLAN (4 BHK+3T - 1911 Sq.ft.)



Key -> a



UNIT PLAN : 4BHK+3T - North Facing (Block - B2)

Saleable Area - 1911 Sq.ft. | Carpet Area - 1193 Sq.ft. | UDS Area : 591 Sq.ft. | Unit Nos. : B2 404 - B2 1304

INDIVIDUAL UNIT PLAN (3 BHK+2T - 1363 Sq.ft.)



Key Plan



UNIT PLAN : 3BHK+2T - North Facing (Block - B1)

Saleable Area - 1363 Sq.ft. | Carpet Area - 847 Sq.ft. | UDS Area : 422 Sq.ft. | Unit Nos. : B1 401 - B1 1301

INDIVIDUAL UNIT PLAN (2 BHK+2T - 1198 Sq.ft.)



Key Plan



UNIT PLAN : 2BHK+2T - North Facing (Block - B1)

Saleable Area - 1198 Sq.ft. | Carpet Area - 752 Sq.ft. | UDS Area : 371 Sq.ft. | Unit Nos. : B1 402 - B1 1302

INDIVIDUAL UNIT PLAN (3 BHK+2T - 1342 Sq.ft.)



Key Plan



UNIT PLAN : 3BHK+2T - East Facing (Block - B1)

Saleable Area - 1342 Sq.ft. | Carpet Area - 850 Sq.ft. | UDS Area : 415 Sq.ft. | Unit Nos. : B1 403 - B1 1303

INDIVIDUAL UNIT PLAN (3 BHK+2T - 1391 Sq.ft.)



Key Plan



UNIT PLAN : 3BHK+2T - East Facing (Block - B1)

Saleable Area - 1391 Sq.ft. | Carpet Area - 841 Sq.ft. | UDS Area : 430 Sq.ft. | Unit Nos. : B1 404 - B1 1304

INDIVIDUAL UNIT PLAN (2 BHK+2T - 1239 Sq.ft.)



Key Plan



UNIT PLAN : 2BHK+2T - East Facing (Block - B1)

Saleable Area - 1239 Sq.ft. | Carpet Area - 743 Sq.ft. | UDS Area : 383 Sq.ft. | Unit Nos. : B1 405 - B1 1305

INDIVIDUAL UNIT PLAN (3 BHK+2T - 1382 Sq.ft.)



Key Plan



UNIT PLAN : 3BHK+2T - East Facing (Block - B1)

Saleable Area - 1382 Sq.ft. | Carpet Area - 840 Sq.ft. | UDS Area : 428 Sq.ft. | Unit Nos. : B1 406 - B1 1306