



 DRA
TRINITY

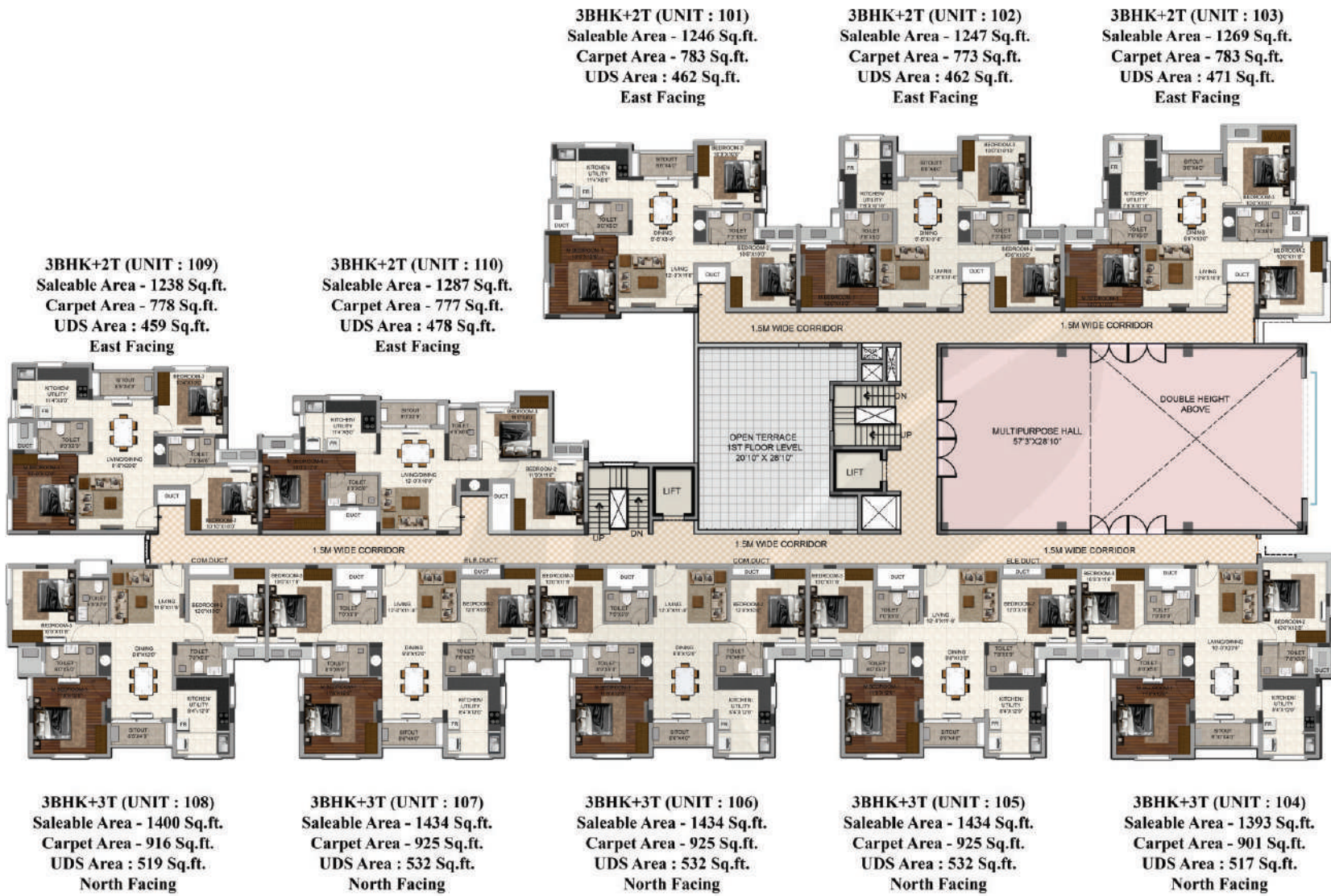
EXPERIENCE THE UNMATCHED TRIO OF
location, Privacy & Space

SITE PLAN





TYPICAL FLOOR PLAN - 1ST FLOOR



TYPICAL FLOOR PLAN - 2nd FLOOR



3BHK+2T (UNIT : 201)
 Saleable Area - 1246 Sq.ft.
 Carpet Area - 783 Sq.ft.
 UDS Area : 462 Sq.ft.
 East Facing

3BHK+2T (UNIT : 202)
 Saleable Area - 1247 Sq.ft.
 Carpet Area - 773 Sq.ft.
 UDS Area : 462 Sq.ft.
 East Facing

3BHK+2T (UNIT : 203)
 Saleable Area - 1269 Sq.ft.
 Carpet Area - 783 Sq.ft.
 UDS Area : 471 Sq.ft.
 East Facing

3BHK+2T (UNIT : 209)
 Saleable Area - 1238 Sq.ft.
 Carpet Area - 778 Sq.ft.
 UDS Area : 459 Sq.ft.
 East Facing

3BHK+2T (UNIT : 210)
 Saleable Area - 1287 Sq.ft.
 Carpet Area - 777 Sq.ft.
 UDS Area : 478 Sq.ft.
 East Facing



3BHK+3T (UNIT : 208)
 Saleable Area - 1400 Sq.ft.
 Carpet Area - 916 Sq.ft.
 UDS Area : 519 Sq.ft.
 North Facing

3BHK+3T (UNIT : 207)
 Saleable Area - 1434 Sq.ft.
 Carpet Area - 925 Sq.ft.
 UDS Area : 532 Sq.ft.
 North Facing

3BHK+3T (UNIT : 206)
 Saleable Area - 1434 Sq.ft.
 Carpet Area - 925 Sq.ft.
 UDS Area : 532 Sq.ft.
 North Facing

3BHK+3T (UNIT : 205)
 Saleable Area - 1434 Sq.ft.
 Carpet Area - 925 Sq.ft.
 UDS Area : 532 Sq.ft.
 North Facing

3BHK+3T (UNIT : 204)
 Saleable Area - 1393 Sq.ft.
 Carpet Area - 901 Sq.ft.
 UDS Area : 517 Sq.ft.
 North Facing





TYPICAL FLOOR PLAN - 3rd FLOOR

3BHK+2T (UNIT : 301)
 Saleable Area - 1246 Sq.ft.
 Carpet Area - 783 Sq.ft.
 UDS Area : 462 Sq.ft.
 East Facing

3BHK+2T (UNIT : 302)
 Saleable Area - 1247 Sq.ft.
 Carpet Area - 773 Sq.ft.
 UDS Area : 462 Sq.ft.
 East Facing

3BHK+2T (UNIT : 303)
 Saleable Area - 1269 Sq.ft.
 Carpet Area - 783 Sq.ft.
 UDS Area : 471 Sq.ft.
 East Facing

3BHK+2T (UNIT : 309)
 Saleable Area - 1238 Sq.ft.
 Carpet Area - 778 Sq.ft.
 UDS Area : 459 Sq.ft.
 East Facing

3BHK+2T (UNIT : 310)
 Saleable Area - 1287 Sq.ft.
 Carpet Area - 777 Sq.ft.
 UDS Area : 478 Sq.ft.
 East Facing



3BHK+3T (UNIT : 308)
 Saleable Area - 1400 Sq.ft.
 Carpet Area - 916 Sq.ft.
 UDS Area : 519 Sq.ft.
 North Facing

3BHK+3T (UNIT : 307)
 Saleable Area - 1434 Sq.ft.
 Carpet Area - 925 Sq.ft.
 UDS Area : 532 Sq.ft.
 North Facing

3BHK+3T (UNIT : 306)
 Saleable Area - 1434 Sq.ft.
 Carpet Area - 925 Sq.ft.
 UDS Area : 532 Sq.ft.
 North Facing

3BHK+3T (UNIT : 305)
 Saleable Area - 1434 Sq.ft.
 Carpet Area - 925 Sq.ft.
 UDS Area : 532 Sq.ft.
 North Facing

3BHK+3T (UNIT : 304)
 Saleable Area - 1393 Sq.ft.
 Carpet Area - 901 Sq.ft.
 UDS Area : 517 Sq.ft.
 North Facing





TYPICAL FLOOR PLAN - 4th & 5th FLOOR

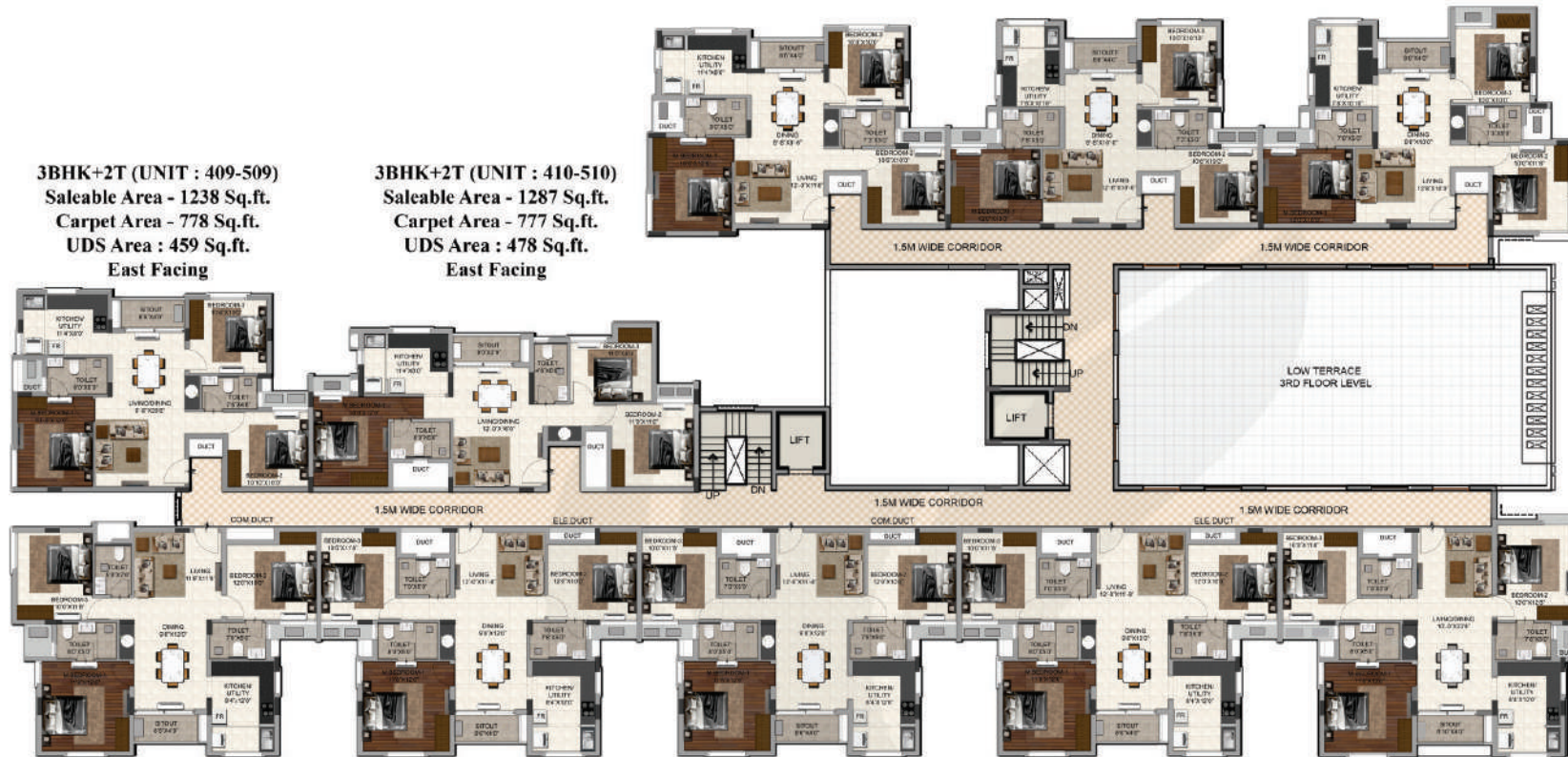
3BHK+2T (UNIT : 401-501)
Saleable Area - 1246 Sq.ft.
Carpet Area - 783 Sq.ft.
UDS Area : 462 Sq.ft.
East Facing

3BHK+2T (UNIT : 402-502)
Saleable Area - 1247 Sq.ft.
Carpet Area - 773 Sq.ft.
UDS Area : 462 Sq.ft.
East Facing

3BHK+2T (UNIT : 403-503)
Saleable Area - 1269 Sq.ft.
Carpet Area - 783 Sq.ft.
UDS Area : 471 Sq.ft.
East Facing

3BHK+2T (UNIT : 409-509)
Saleable Area - 1238 Sq.ft.
Carpet Area - 778 Sq.ft.
UDS Area : 459 Sq.ft.
East Facing

3BHK+2T (UNIT : 410-510)
Saleable Area - 1287 Sq.ft.
Carpet Area - 777 Sq.ft.
UDS Area : 478 Sq.ft.
East Facing



3BHK+3T (UNIT : 408-508)
Saleable Area - 1400 Sq.ft.
Carpet Area - 916 Sq.ft.
UDS Area : 519 Sq.ft.
North Facing

3BHK+3T (UNIT : 407-507)
Saleable Area - 1434 Sq.ft.
Carpet Area - 925 Sq.ft.
UDS Area : 532 Sq.ft.
North Facing

3BHK+3T (UNIT : 406-506)
Saleable Area - 1434 Sq.ft.
Carpet Area - 925 Sq.ft.
UDS Area : 532 Sq.ft.
North Facing

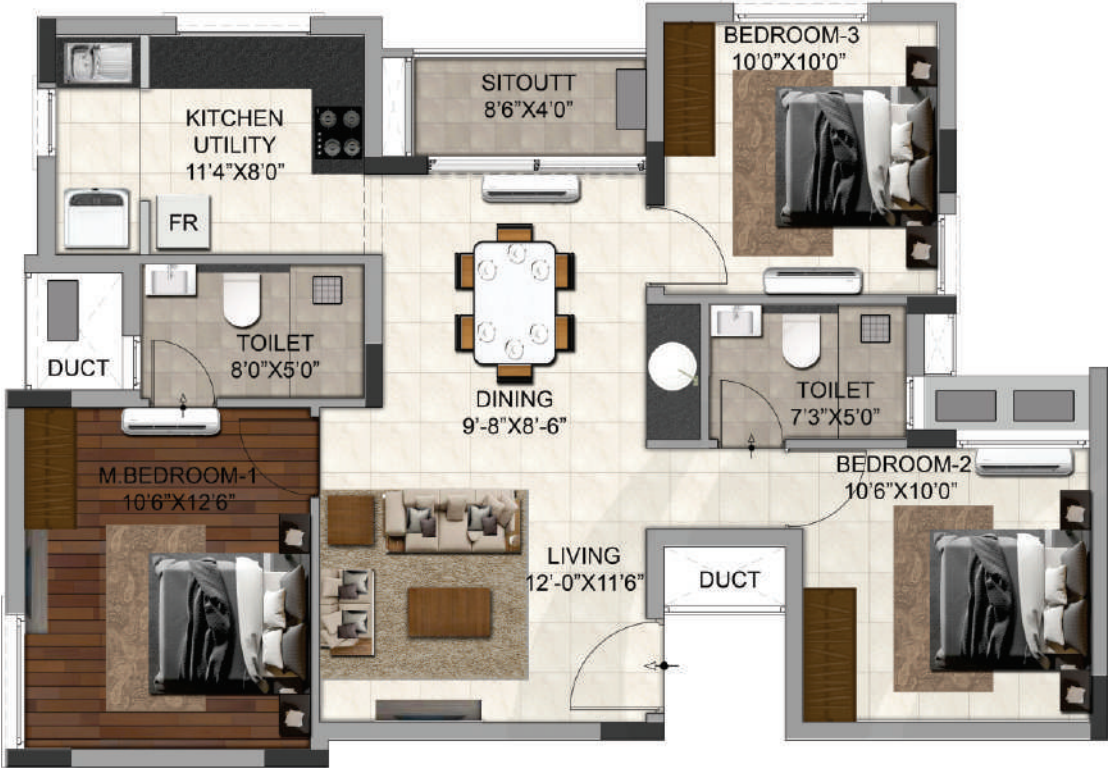
3BHK+3T (UNIT : 405-505)
Saleable Area - 1434 Sq.ft.
Carpet Area - 925 Sq.ft.
UDS Area : 532 Sq.ft.
North Facing

3BHK+3T (UNIT : 404-504)
Saleable Area - 1393 Sq.ft.
Carpet Area - 901 Sq.ft.
UDS Area : 517 Sq.ft.
North Facing





INDIVIDUAL UNIT PLAN - 1 (3 BHK+2T - 1246 Sq.ft.)



Key Plan



UNIT PLAN -1 : 3BHK+2T - East Facing

Saleable Area - 1246 Sq.ft. | Carpet Area - 783 Sq.ft. | UDS Area : 462 Sq.ft. | Unit Nos. : 101 - 501

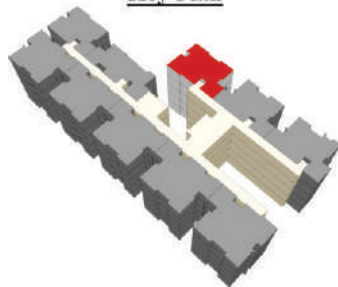




ISOMETRIC VIEW (3 BHK+2T - 1246 Sq.ft.)



Key Plan



UNIT PLAN -1 : 3BHK+2T - East Facing

Saleable Area - 1246 Sq.ft. | Carpet Area - 783 Sq.ft. | UDS Area : 462 Sq.ft. | Unit Nos. : 101 - 501



INDIVIDUAL UNIT PLAN - 2 (3 BHK+2T - 1247 Sq.ft.)



Key Plan



UNIT PLAN - 2 : 3BHK+2T - East Facing

Saleable Area - 1247 Sq.ft. | Carpet Area - 773 Sq.ft. | UDS Area : 462 Sq.ft. | Unit Nos. : 102 - 502

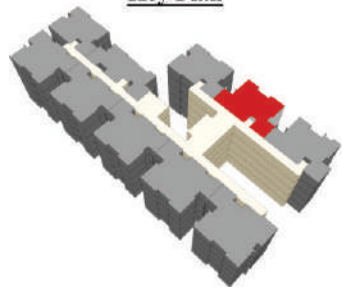




ISOMETRIC VIEW (3 BHK+2T - 1247 Sq.ft.)



Key Plan

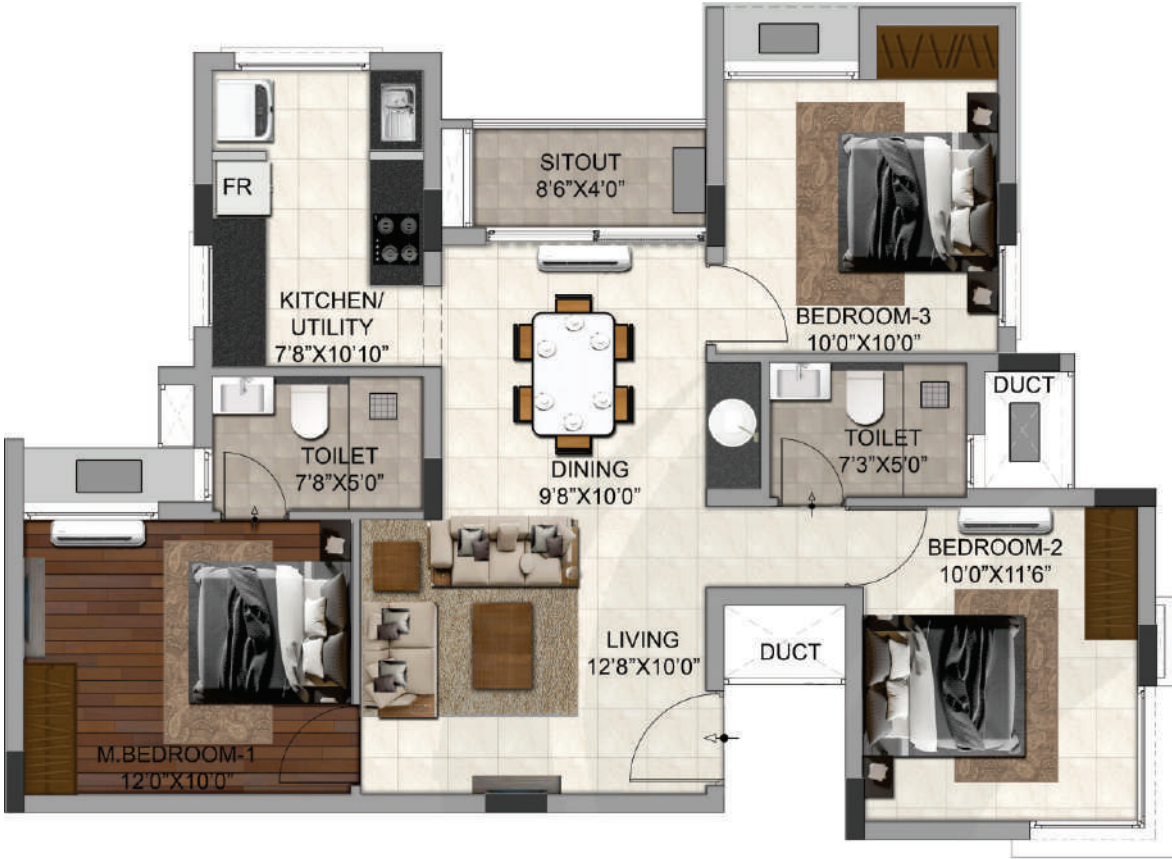


UNIT PLAN - 2 : 3BHK+2T - East Facing

Saleable Area - 1247 Sq.ft. | Carpet Area - 773 Sq.ft. | UDS Area : 462 Sq.ft. | Unit Nos. : 102 - 502



INDIVIDUAL UNIT PLAN - 3 (3 BHK+2T - 1269 Sq.ft.)



Key Plan



UNIT PLAN -3 : 3BHK+2T - East Facing

Saleable Area - 1269 Sq.ft. | Carpet Area - 783 Sq.ft. | UDS Area : 471 Sq.ft. | Unit Nos. : 103 - 503





ISOMETRIC VIEW (3 BHK+2T - 1269 Sq.ft.)



Key Plan



UNIT PLAN -3 : 3BHK+2T - East Facing

Saleable Area - 1269 Sq.ft. | Carpet Area - 783 Sq.ft. | UDS Area : 471 Sq.ft. | Unit Nos. : 103 - 503

INDIVIDUAL UNIT PLAN - 4 (3 BHK+3T - 1393 Sq.ft.)



UNIT PLAN - 4 : 3BHK+3T - North Facing

Saleable Area - 1393 Sq.ft. | Carpet Area - 901 Sq.ft. | UDS Area : 517 Sq.ft. | Unit Nos. : 104 - 504

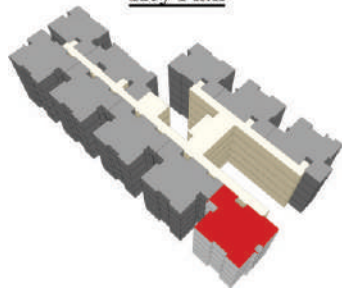




ISOMETRIC VIEW (3 BHK+3T - 1393 Sq.ft.)



Key Plan



UNIT PLAN - 4 : 3BHK+3T - North Facing

Saleable Area - 1393 Sq.ft. | Carpet Area - 901 Sq.ft. | UDS Area : 517 Sq.ft. | Unit Nos. : 104 - 504

INDIVIDUAL UNIT PLAN - 5 (3 BHK+3T - 1434 Sq.ft.)



Key Plan



UNIT PLAN - 5 : 3BHK+3T - North Facing

Saleable Area - 1434 Sq.ft. | Carpet Area - 925 Sq.ft. | UDS Area : 532 Sq.ft. | Unit Nos. : 105 - 505

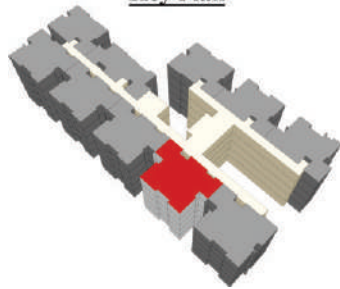




ISOMETRIC VIEW (3 BHK+3T - 1434 Sq.ft.)



Key Plan



UNIT PLAN - 5 : 3BHK+3T - North Facing

Saleable Area - 1434 Sq.ft. | Carpet Area - 925 Sq.ft. | UDS Area : 532 Sq.ft. | Unit Nos. : 105 - 505



INDIVIDUAL UNIT PLAN - 6 (3 BHK+3T - 1434 Sq.ft.)



Key Plan



UNIT PLAN - 6 : 3BHK+3T - North Facing

Saleable Area - 1434 Sq.ft. | Carpet Area - 925 Sq.ft. | UDS Area : 532 Sq.ft. | Unit Nos. : 106 - 506

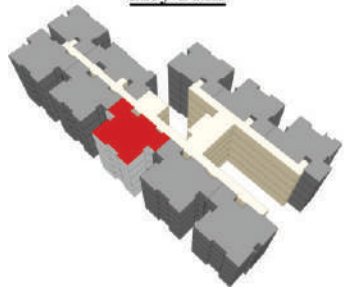




ISOMETRIC VIEW (3 BHK+3T - 1434 Sq.ft.)



Key Plan



UNIT PLAN - 6 : 3BHK+3T - North Facing

Saleable Area - 1434 Sq.ft. | Carpet Area - 925 Sq.ft. | UDS Area : 532 Sq.ft. | Unit Nos. : 106 - 506



INDIVIDUAL UNIT PLAN - 7 (3 BHK+3T - 1434 Sq.ft.)



Key Plan

UNIT PLAN - 7 : 3BHK+3T - North Facing

Saleable Area - 1434 Sq.ft. | Carpet Area - 925 Sq.ft. | UDS Area : 532 Sq.ft. | Unit Nos. : 107 - 507

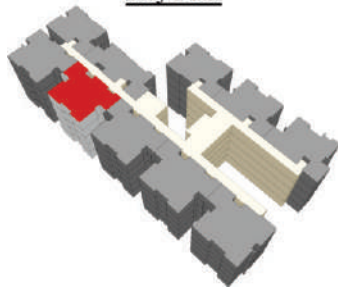




ISOMETRIC VIEW (3 BHK+3T - 1434 Sq.ft.)



Key Plan



UNIT PLAN - 7 : 3BHK+3T - North Facing

Saleable Area - 1434 Sq.ft. | Carpet Area - 925 Sq.ft. | UDS Area : 532 Sq.ft. | Unit Nos. : 107 - 507



INDIVIDUAL UNIT PLAN - 8 (3 BHK+3T - 1400 Sq.ft.)



Key Plan



UNIT PLAN - 8 : 3BHK+3T - North Facing

Saleable Area - 1400 Sq.ft. | Carpet Area - 916 Sq.ft. | UDS Area : 519 Sq.ft. | Unit Nos. : 108 - 508

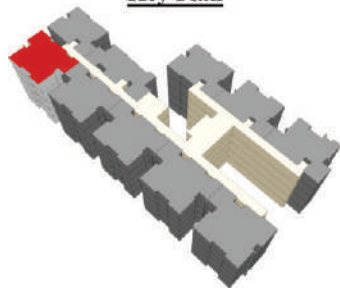




ISOMETRIC VIEW (3 BHK+3T - 1400 Sq.ft.)



Key Plan



UNIT PLAN - 8 : 3BHK+3T - North Facing

Saleable Area - 1400 Sq.ft. | Carpet Area - 916 Sq.ft. | UDS Area : 519 Sq.ft. | Unit Nos. : 108 - 508

INDIVIDUAL UNIT PLAN - 9 (3 BHK+2T - 1238 Sq.ft.)



Key Plan



UNIT PLAN - 9 : 3BHK+2T - East Facing

Saleable Area - 1238 Sq.ft. | Carpet Area - 778 Sq.ft. | UDS Area : 459 Sq.ft. | Unit Nos. : 109 - 509

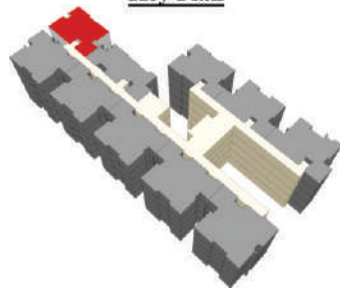




ISOMETRIC VIEW (3 BHK+2T - 1238 Sq.ft.)



Key Plan



UNIT PLAN - 9 : 3BHK+2T - East Facing

Saleable Area - 1238 Sq.ft. | Carpet Area - 778 Sq.ft. | UDS Area : 459 Sq.ft. | Unit Nos. : 109 - 509

INDIVIDUAL UNIT PLAN - 10 (3 BHK+2T - 1287 Sq.ft.)



Key Plan



UNIT PLAN - 10 : 3BHK+2T - East Facing

Saleable Area - 1287 Sq.ft. | Carpet Area - 777 Sq.ft. | UDS Area : 478 Sq.ft. | Unit Nos. : 110 - 510

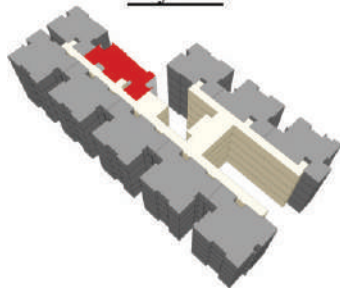




ISOMETRIC VIEW (3 BHK+2T - 1287 Sq.ft.)



Key Plan



UNIT PLAN -10 : 3BHK+2T - East Facing

Saleable Area - 1287 Sq.ft. | Carpet Area - 777 Sq.ft. | UDS Area : 478 Sq.ft. | Unit Nos. : 110 - 510