

**DRA INFINIQUE**  
MONTHLY CONSTRUCTION PHOTOS - JUNE 2026



## PLUMBING SHAFT WORK IN PROGRESS



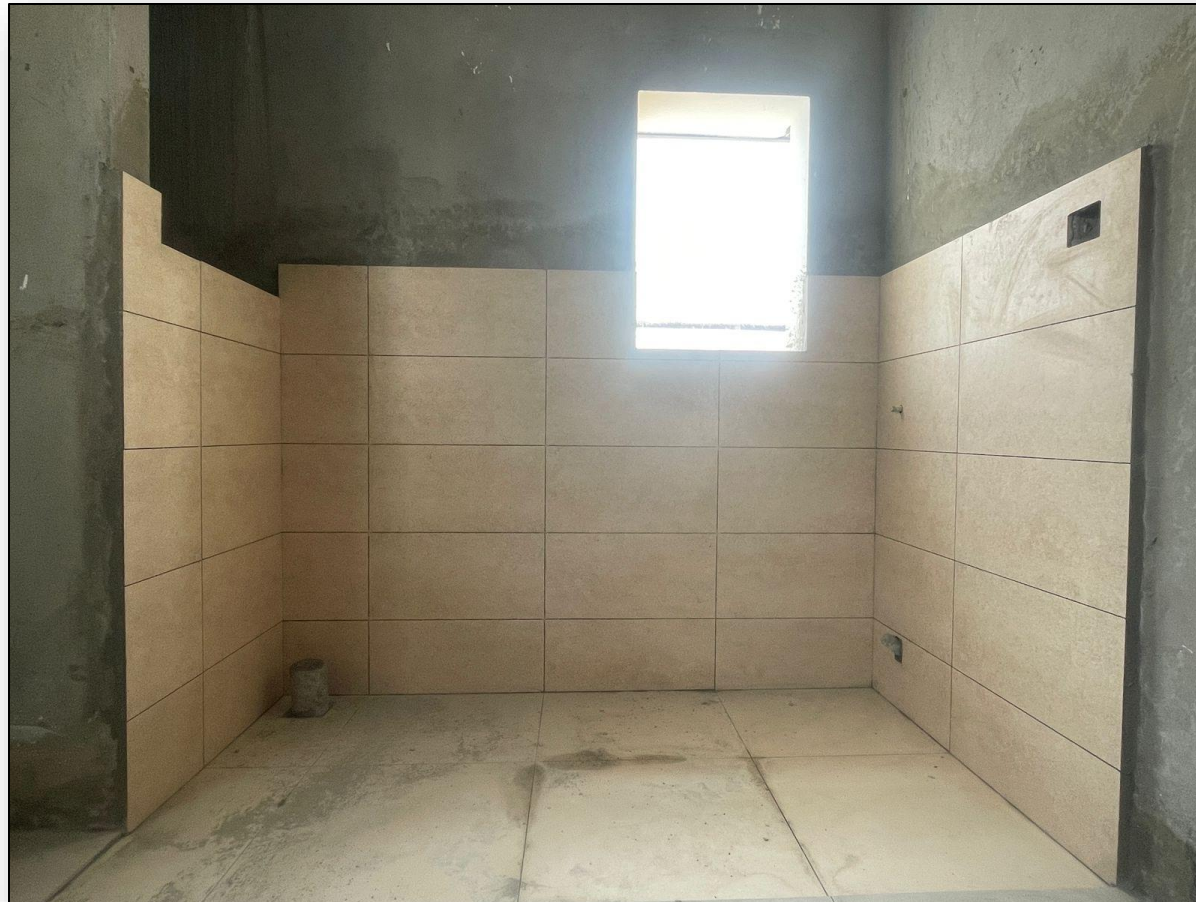
## EAST SIDE COMPOUND WALL PLASTERING WORK IN PROGRESS



## 11<sup>TH</sup> FLOOR BATHROOM WALL AND FLOOR LAYING WORK IN PROGRESS



## 10<sup>TH</sup> FLOOR UTILITY WALL AND FLOOR TILE LAYING WORK IN PROGRESS



## 11<sup>TH</sup> AND 10<sup>TH</sup> FLOOR TILE LAYING WORK IN PROGRESS



## 2<sup>ND</sup> AND 3<sup>RD</sup> PUTTY SANDING WORK IN PROGRESS



## **BASEMENT PRIMER WORK IN PROGRESS**



## TERRACE SCREED CONCRETE PREPARATION WORK IN PROGRESS



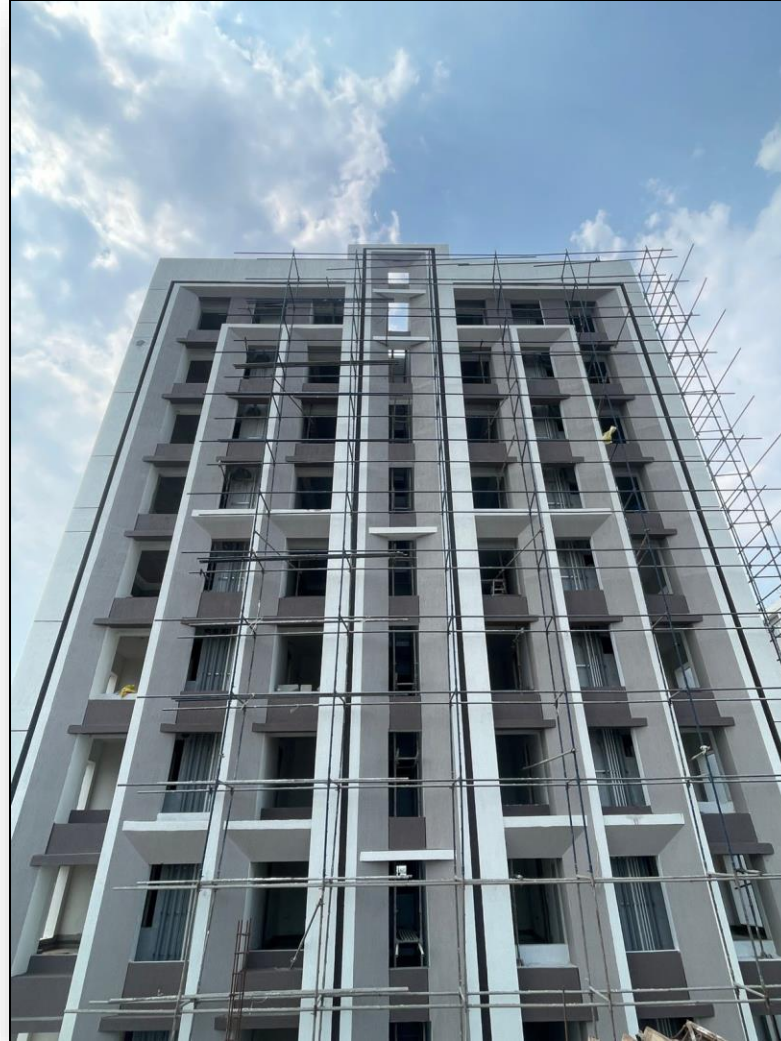
## **FIRE FIGHTING WORK IN PROGRESS**



## WEST SIDE EXTERNAL TEXTURE WORK IN PROGRESS



## **SOUTH SIDE EXTERNAL PAINTING WORK IN PROGRESS**



## **NORTH SIDE EXTERNAL PAINTING WORK IN PROGRESS**



## COMMERCIAL STILT FLOOR BLOCK WORK IN PROGRESS



## ENTRANCE ARCH BACK FILLING WORK IN PROGRESS



## LIFT ERECTION WORK IN PROGRESS



**LIFT FASCIA GRANITE WORK IN PROGRESS**



*Thank  
you!*