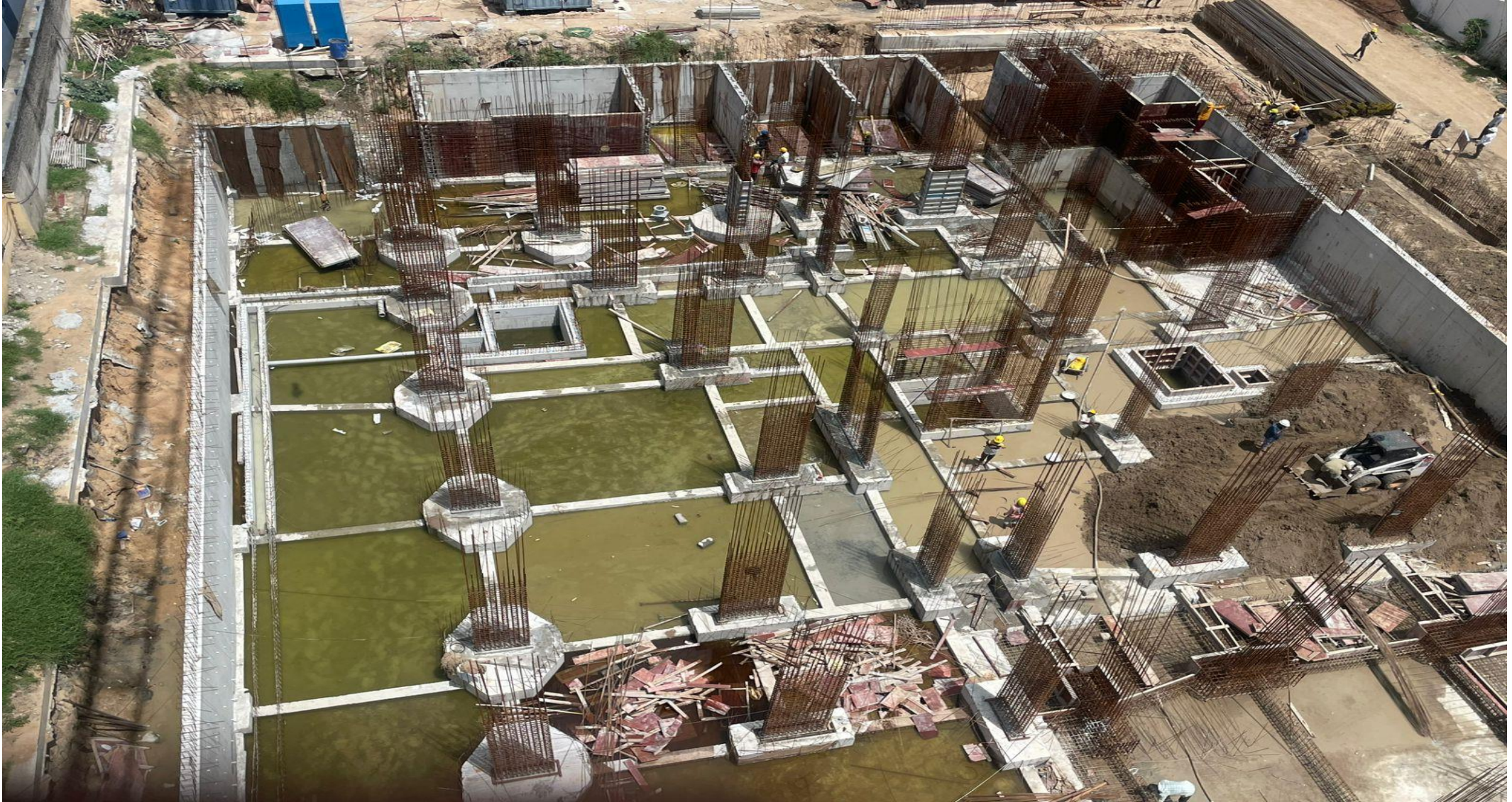
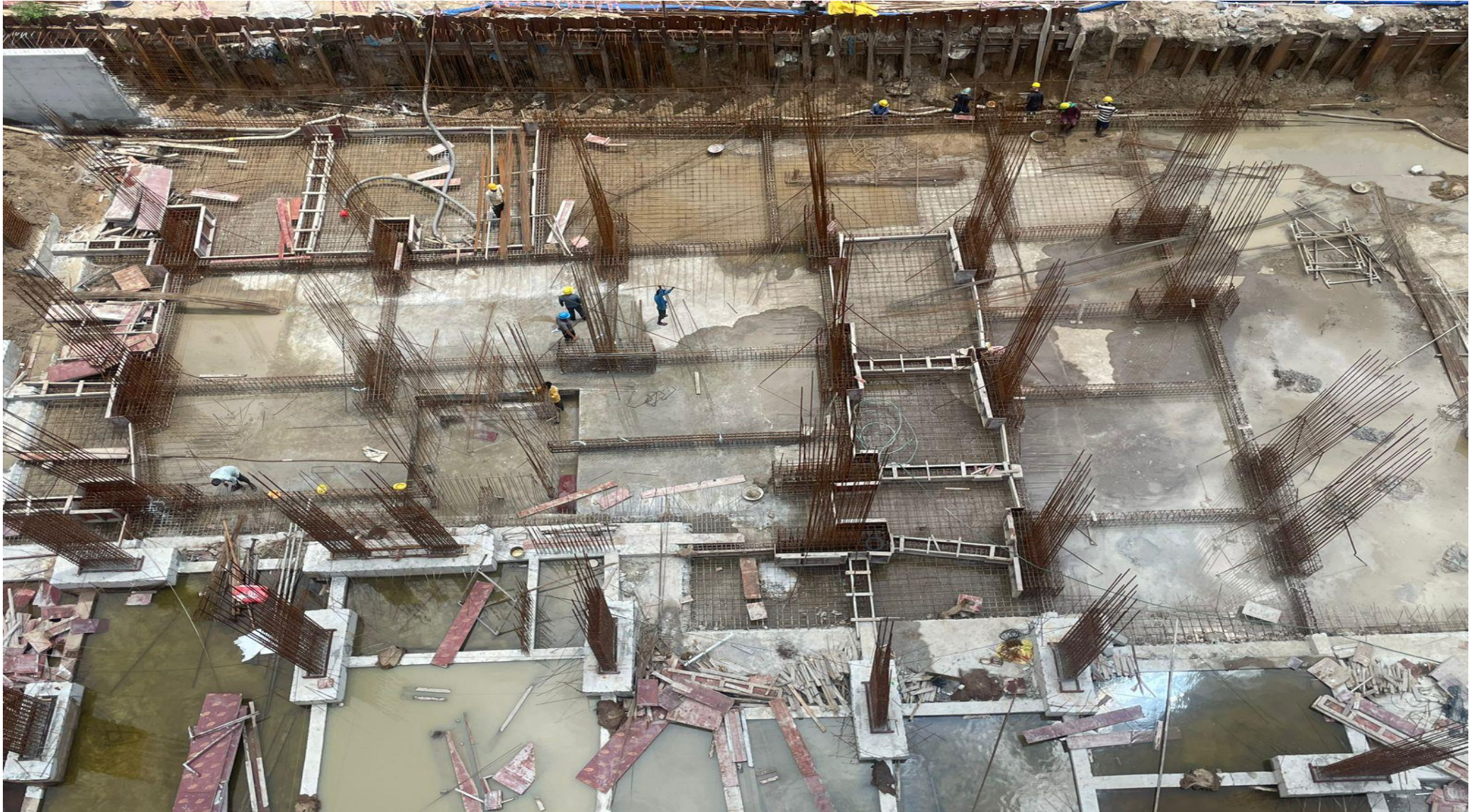




DRA INFINIQUE CONSTRUCTION UPDATES SEPTEMBER - 24



North Side View



East Side View.



South Side View.



North east corner view.



South East corner view.



North West corner view.



Pour-02 raft concrete work completed.



Pour-02 Remaining Area PCC work completed.



Main building retaining wall concrete work completed 115/267.5 Rmt



UG sump wall Concrete work completed.



STP around area backfilling work completed.



T-01 Basement floor soil backfilling work in progress.



Pour-02 Pile chipping work completed.



Pour 2 Area pile integrity test completed.



Pour 2 Area Pile eccentricity test completed.



Pour 2 balance area raft slab reinforcement work in progress



Pour 2 balance area raft pile cap & beam shuttering work in progress



Basement floor pour-2 lift around area ATT work completed.



Basement floor pour-2 lift around area PCC work completed.



West side retaining Wall water proofing work in progress.



West side contiguous pile chipping work in progress.



T-1 Column starter concrete work completed.



T-1 Column Shuttering work in progress.



Dewatering work in progress.



Dewatering work completed.



*Thank
you!*