



DRA POLARIS

Construction Updates Photos – September 2024



Sales Office Plinth beam above Blockwork completed.



Sales Office Blockwork Inside Soil filling and Consolidation work completed.



Sales Office Top PCC work completed.



Sales Office Shifting & Erection work Completed.



Sales Office External Below Blockwork Plastering work Completed.



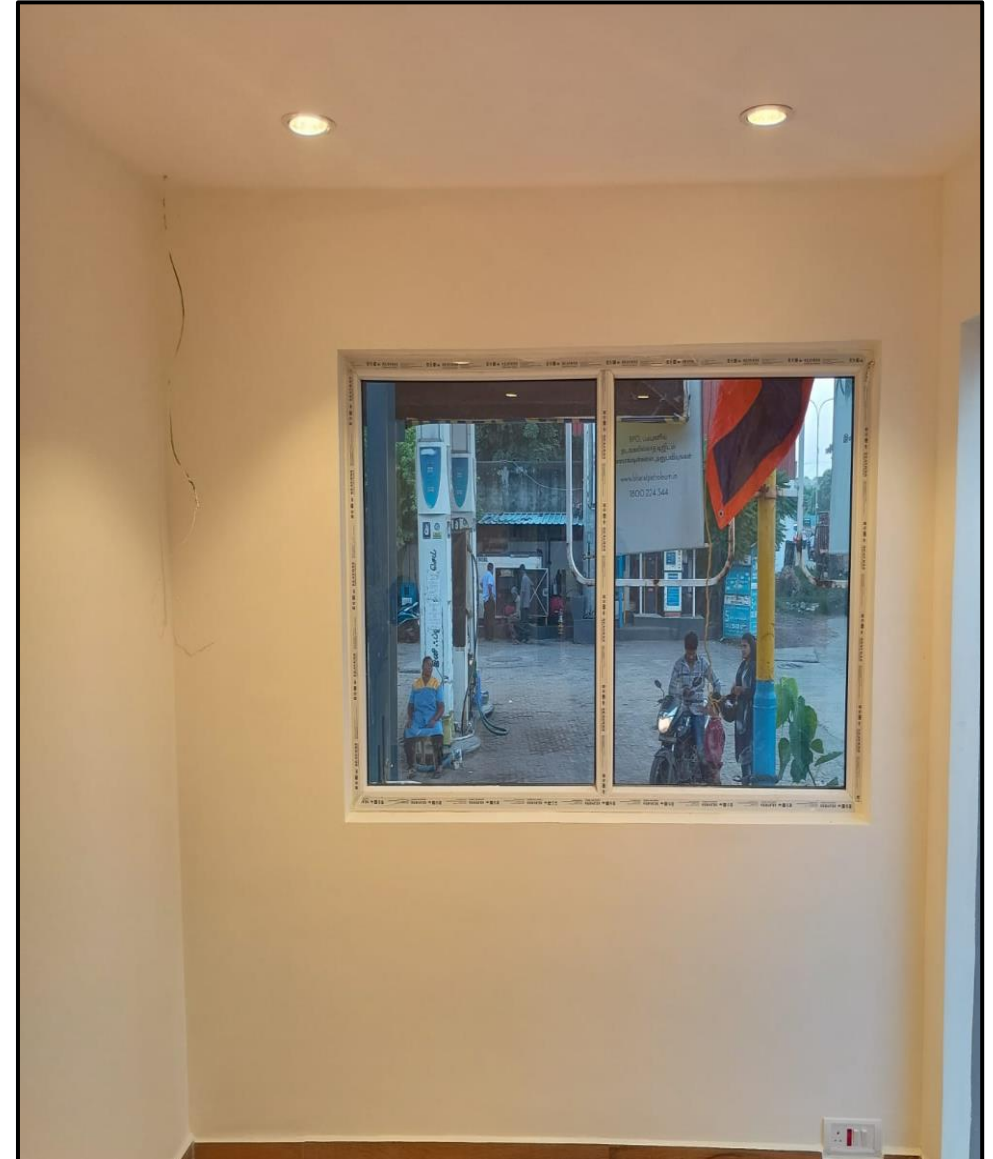
Sales Office Tiling work Completed.



Sales Office Pantry Interior work in progress.



Sales Office Internal door fixing work Completed.



Sales Office 2nd Coat Internal Painting work Completed.



Sales Office Staircase Blockwork & Plastering work Completed.



Sales office Staircase Granite & Handrail work Completed.



Sales Office ACP Cladding Completed



Sales Office Toilet PCC work Completed.



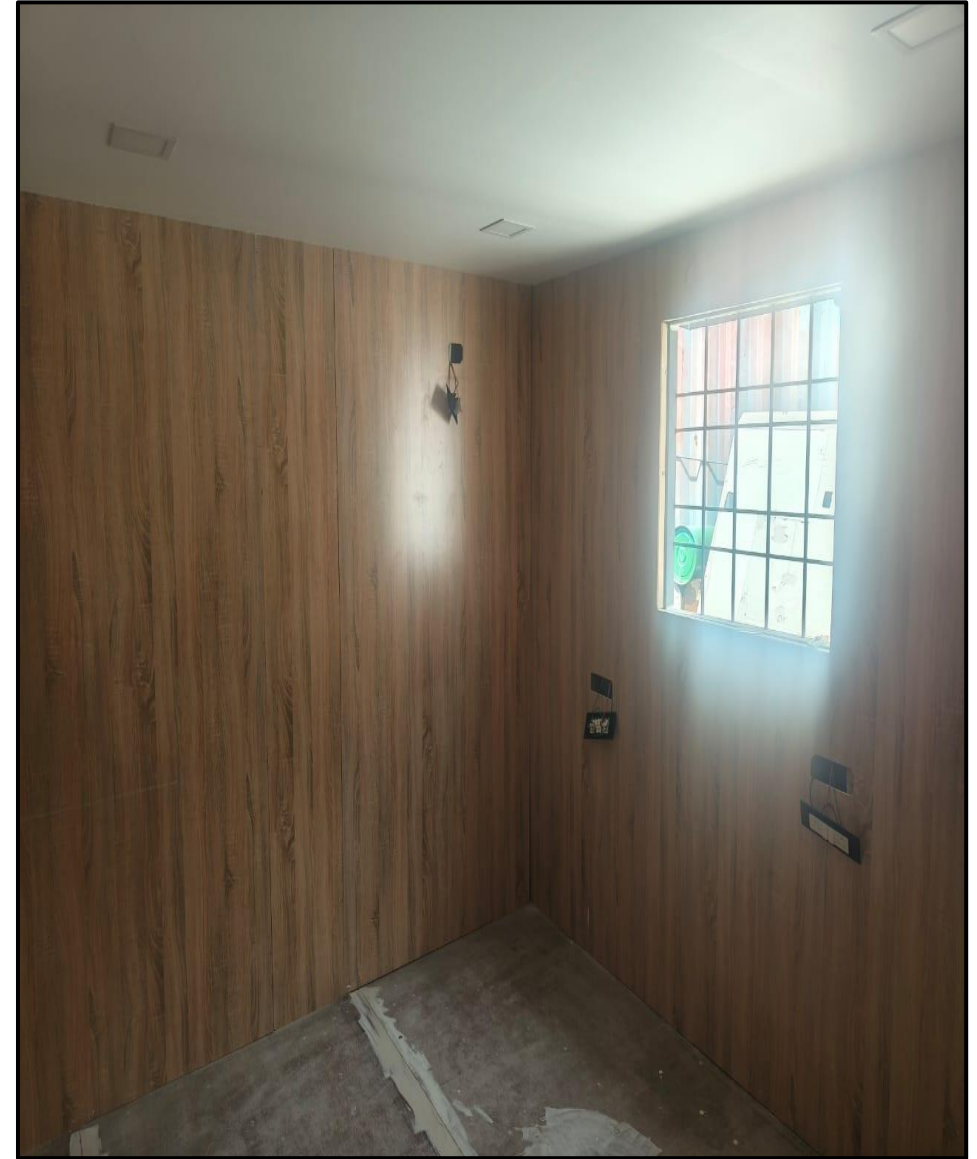
Sales Office Toilet Plinth Beam work Completed & Blockwork in progress.



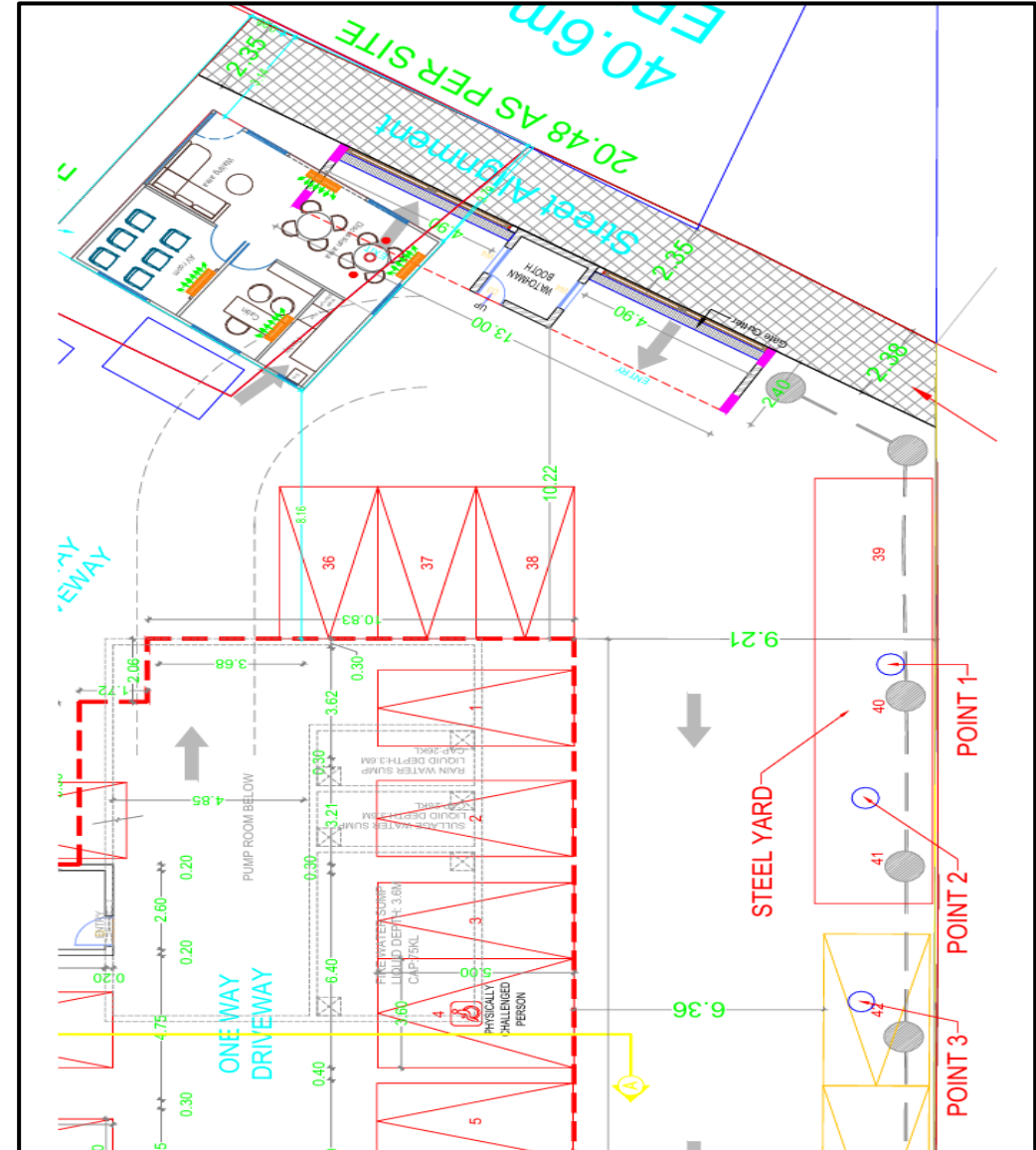
Sales Office Toilet Lintel level Blockwork in progress.



Sales Office DG Bed, Water Tank & Booster Pump Pedestal work in progress.



Project Office Container Internal wiring & False ceiling work completed.



Site Borewell Divining work has been done and 3 points has been given.



Borewell Drilling 1nos work Completed.



Borewell Pump Erection 1nos work completed.

*Thank
you!*