



DRA INFINIQUE CONSTRUCTION UPDATES AUGUST - 24



North Side View



South Side View.



North East corner view.



South East corner view.



Basement P-01 UG Sump raft concrete work completed.



Basement P-01 UG Sump raft slab de-shuttering work completed.



Basement P-01 UG Sump raft slab curing work in progress.



Basement Pour 1 raft slab reinforcement work in progress.



Basement P-02 Pile cap & beam reinforcement work in progress.



Basement P-01 UG Sump around area wall reinforcement work in progress.



Basement P-01 Raft Pile cap & beam shuttering work in progress.



Basement P-01 Raft Concrete work completed.



Basement P-01 Raft de-shuttering work completed.



East side retaining wall starter shuttering work completed.



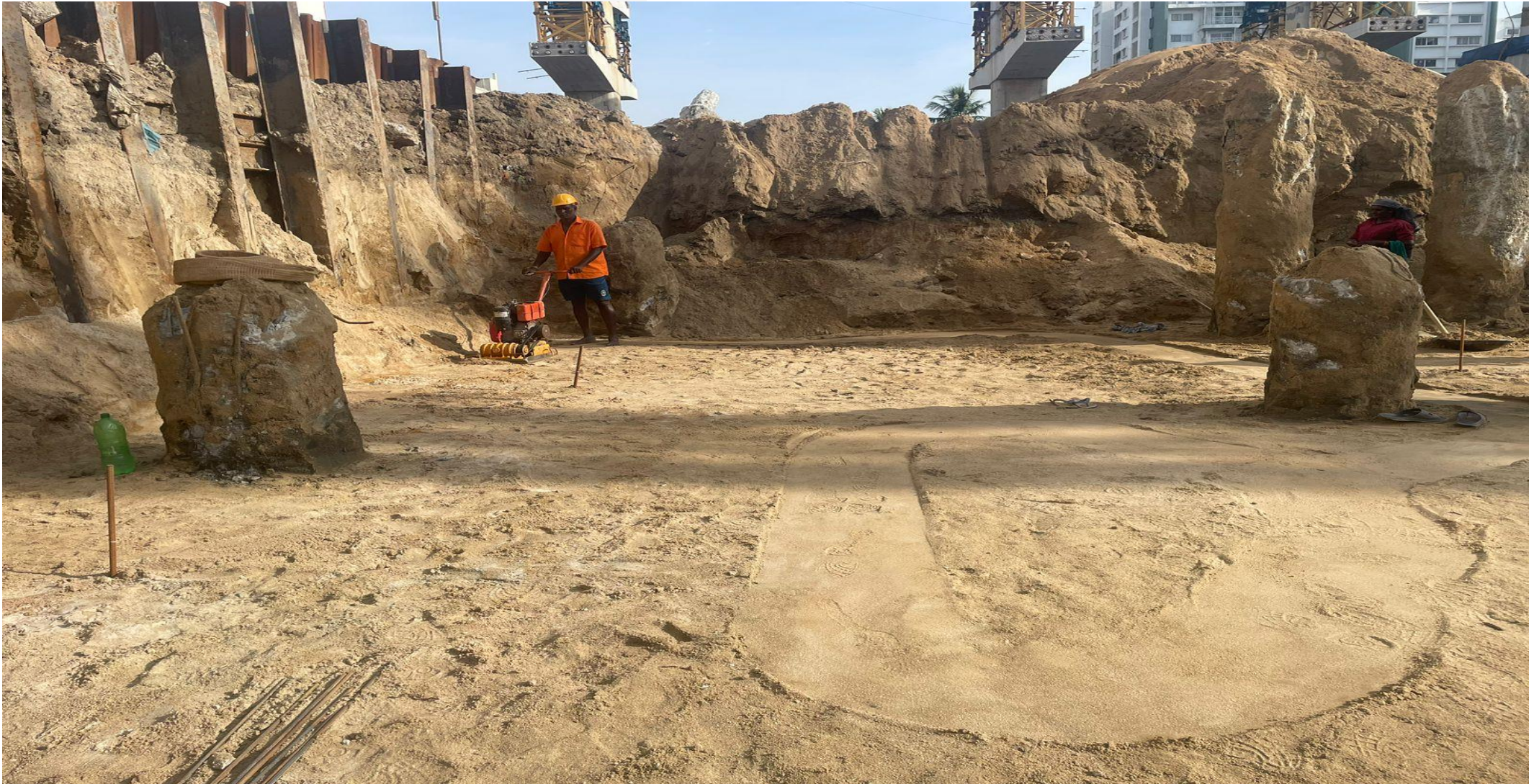
East side retaining wall starter Concrete work completed.



East side retaining wall shuttering work in progress.



Pour - 02 area excavation works.



Pour 02 area levelling & compaction works.



Pour 02 area Anti Termite works completed.



Pour -02 & 03 area PCC completed, pile chipping work in progress.



Pour-02 & 03 pile integrity test work completed.



Pour-02 Raft, pile cap & beam reinforcement work in progress.



Pour-02 area shuttering work in progress.



Pour-01 area column reinforcement work in progress.



Sheet pile shoring work completed.



Sales office, foundation work completed.



*Thank
you!*